



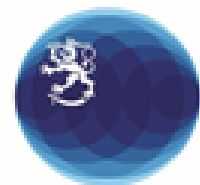
PARTICIPATORY PLANTATION FORESTRY PROGRAMME

Quarterly Progress Report for the period from 1 October 2020 to 31 December 2020

Version 31 March 2021



United Republic of Tanzania
**MINISTRY OF NATURAL RESOURCES
AND TOURISM**
Forestry and Beekeeping Division



Embassy of Finland
Dar es Salaam



Participatory Plantation Forestry Programme (PFP 2)

Phase 2: 1 November 2019 to 31 October 2023

Quarterly Progress Report for the period from 1 October 2020 to 31 December 2020

January 2021, Iringa, Tanzania



Report distribution:	Open when approved.
Report preparation:	Programme Management Team, Iringa, Tanzania
Approved by the CTA on:	January 2021
Approved the QAT on:	February 2021
Approved by the PSC on:	3 March 2021



United Republic of Tanzania
**MINISTRY OF NATURAL RESOURCES
AND TOURISM**
Forestry and Beekeeping Division



Embassy of Finland
Dar es Salaam

Participatory Plantation Forestry Programme (PFP 2)

Quarterly Progress Report for the Period from 1 October 2020 to 31 December 2020

Report authors:

Programme Management Team, PFP 2, Iringa, Tanzania.

Other contributors:

Quality Assurance Team (QAT): Indufor Oy, Helsinki, Finland and NIRAS.

Recommended citation:

Participatory Plantation Forestry Programme (2020). Quarterly progress report for the period from 1 October 2020 to 31 December 2020. Iringa, Tanzania.

Participatory Plantation Forestry Programme (PFP 2) – Panda MitiKibiashara

Plot No. 21, Block 1, Zone 1A

Gangilonga

P.O. Box 2244, Iringa.

www.privateforestry.or.tz

Cover photo: Participants of the PFP 2 Mafinga Forestry Industry Cluster inception workshop.

TABLE OF CONTENTS

EXECUTIVE SUMMARY	9
1. PROGRAMME DESCRIPTION.....	13
2. PROGRESS TOWARDS THE ACHIEVEMENT OF THE EXPECTED RESULTS.....	15
2.1 Broad programme management arrangements update	15
2.2 Result 1 Tree growers establish and manage plantations	15
2.2.1 Output 1.1 private forestry organisations are strengthened.....	15
2.2.2 Output 1.2. Stakeholders´ capacity in tree-growing has been strengthened	18
2.2.3 Output 1.3. Tree growers´ access to forest financing increased and diversified	22
2.2.4 Output 1.4. People have increased capacity and resources to manage fires.....	23
2.2.5 Output 1.5 Strengthened communication	23
2.2.6 Output 1.6. Institutionalization of private forestry	25
2.3 Result 2 SMEs establish and manage value-adding processing enterprises	27
2.3.1 Output 2.1. Capacity of SMEs and their employees strengthened	27
2.3.2 Output 2.2. Increased access of SMEs to financing	31
2.3.3 Output 2.3. Improved recovery of raw materials and quality of products along the value chain	32
2.3.4 Output 2.4. Improved communication and integration of forestry and wood industry associations, enterprises, and clients	35
2.3.5 Output 2.5. Policy and partnership support.....	37
2.4 Progress of the inception phase outputs carried to implementation period	38
2.4.1 Programme Document revised and approved	38
2.4.2 Familiarization of programme management team and stakeholders	39
2.4.3 Development of MoUs with districts and partners.....	40
2.4.4 Establishment of annual service provision contracts	40
2.4.5 Development of PFP 2 communication strategy	40
2.4.6 Development of monitoring and evaluation plan for PFP 2.....	40
3. RESOURCES AND BUDGET	41
3.1 Finance	41
3.2 Reasons for over and under expenditure	41
3.3 Technical assistance	41
3.4 Procurement update	41
4. ASSUMPTIONS AND RISKS.....	44
4.1 Assumptions	44
4.2 Risk assessment and mitigation of the risk	44
4.2.1 Programme document identified risks	44
4.2.2 Programme emerging risks	44
5. PLANNED ACTIVITIES FOR NEXT QUARTER.....	46
6. LESSONS LEARNT, CONCLUSIONS AND RECOMMENDATIONS	47

LIST OF ANNEXES

Annex 1 Result-based management framework.....	48
Annex 2 Suggested changes to RBMF indicators of PFP 2	61
Annex 3 Procurement list and progress update.....	69

LIST OF FIGURES

Figure 2.1	Spatial distribution of the established demonstrations woodlots in Makete	20
Figure 3.1	Brief summary of the second quarter expenditure versus the budget.....	41

LIST OF TABLES

Table 2.1	Ratings used for the achievement statuses of activities performed during the period October – December 2020.....	15
Table 2.2	PFP 2 selected villages in Makete.	16
Table 2.3	List of visited PFP 2 pre-selected villages in Mafinga and Njombe forest industry cluster	18
Table 2.4	Established demonstration woodlots in Makete with ownership type.....	19
Table 2.5	Summary of the OSP audit and evaluation.....	23
Table 2.6	Fund breakdown for the proposal submitted to EUT and stakeholders included.....	29
Table 2.7	Summary of the income generated by FWITC	29
Table 2.8	Participants of the first steering committee meeting of the afri-furniture project	32
Table 2.9	Summary of the major meetings and workshops.....	39
Table 3.1	The programme expenditure for six months from 1 July to 31 December 2020	42
Table 3.2	The programme expenditure versus the budget for the period of 1 October to 31 December 2020.....	43
Table 4.1	Risk matrix for the emerging risks.....	44

ABBREVIATIONS

AF	African Forest
AWP	Annual Work Plan
BoPs	Best operating practices
BRELA	Business registrations and licensing agency
CCRO	Certificate of Customary Right of Occupancy
CMT	Council Management Team
Covid-19	Corona virus disease discovered in 2019
CTA	Chief Technical Advisor
DAI	Development Alternatives Incorporated
DC	District commissioner
DO	District officials
DTSP	Directorate of Tree Seed Production
EIA	Environmental impact assessment
ESEIA	European Sustainable Energy Innovation Alliance
EUR	Euro
EUT	European Union Transition
FBD	Forest and Beekeeping Division
FDT	Forestry Development Trust
FIC	Forest industry cluster
FICC	Forest industry cluster coordinator
FITI	Forest Industries Training Institute
FMIS	Forestry management information system
FORVAC	Forest and Value Chain Programme
FTI	Forestry Training Institute
FWITC	Forest and Wood Industries Training Centre
GN	Guide number
GoF	Government of Finland
GoT	Government of Tanzania
GRL	Green Resources Limited
HIV	Human Immunodeficiency Virus
HQ	Head quarter
HRBA	Human rights-based approach
IBEK	Improved basic earth kiln
ISS	International Summer School
KIWAHIHAMA	Mang'oto Ilindiwe tree growers' association
KIWAMIMA	Mago Ilindiwe tree growers' association
KKKT	Evangelical Lutheran Church in Tanzania
KVTC	Kilombero Valley Teak Company
LUMAKI	a combination of three villages: Lupalilo, Mago and Kising'a villages
MaIS	Market information system
MaIS	Marketing information system
MAST	Mobile Application to Secure Tenure
MEUR	Million Euro
MFA	Ministry for Foreign Affairs of Finland
MIS	Programme Management Information System
MJUMITA	Social Network for Forest Management in Tanzani
Mkaa Endelevu	Bio energy company limited in Mafinga
MNRT	Ministry of Natural Resources and Tourism
MoE	Ministry of Education, Science and Technology
MoF	Ministry of Finance and Planning
MoU	Memorandum of Understanding
NAFAC	National forest advisory committee
NFC	New Forests Company
NGO	Non-governmental organisation
NLUPC	National Land Use Planning Commission
NOFIA	Northern Forest Industries Associations
ODK	Open Data Kit
OSHA	Occupational Safety and Health Authority

OSP	Out-growers Support Scheme
PD	Programme Document
PFCTT	Private Forestry and Carbon Trading in Tanzania
PFP 1	Private Forestry Programme
PFP 2	Participatory Plantation Forestry Programme – Phase 2
PIM	Programme Implementation Manual
PMT	Programme Management Team
PPI	Progress out of Poverty Index
PSC	Programme Steering Committee
QAT	Quality Assurance Team
RBMF	Results-based management framework
RC	Regional commissioner
RFO	Regional forest officer
SAFIA	Southern Highlands Forest Industries Association
SAGCOT	Southern Agricultural Growth Corridor of Tanzania
SCABPU	Sustainable Charcoal and Briquette Producers Union
SFM	Sustainable forest management
SHIVIMITA	Tanzania Forest Industries Federation
SIDO	Small Industries Development Organisation
SMART	Goal-setting tool: specific, measurable, attainable, relevant & time-bound
SME	Small and medium enterprises
SUA	Sokoine University of Agriculture
TaFF	Tanzania Forest Fund
TAFORI	Tanzania Forest Research Institute
TAMISEMI	President's Office Regional Administration and Local Government
TANWAT	Tanganyika Wattle Company
TARURA	Tanzania Rural and Urban Road Agency
TASAF	Tanzania Social Action Fund
TC	Town council
TDV	Tanzania Development Vision
TFS	Tanzania Forest Service Agency
TGA	Tree growers' association
TNBC	Tanzania national business council
ToRs	Terms of references
TPSF	Tanzania Private Sector Foundation
TTGAU	Tanzania Tree Growers Association Union
TZS	Tanzania standard
TZS	Tanzanian shillings
Upendo group	Ilindiwe tree growers' association
UWAMI	Ibaga tree growers' association
UWASA	Sao Hill Sawmillers Association
VAT	Value-added tax
VET	Vocational education and training
VETA	Vocational Education and Training Authority
VLUP	Village land-use planning
VSLA	Village savings and loan association
WWF	Worldwide Fund for Nature

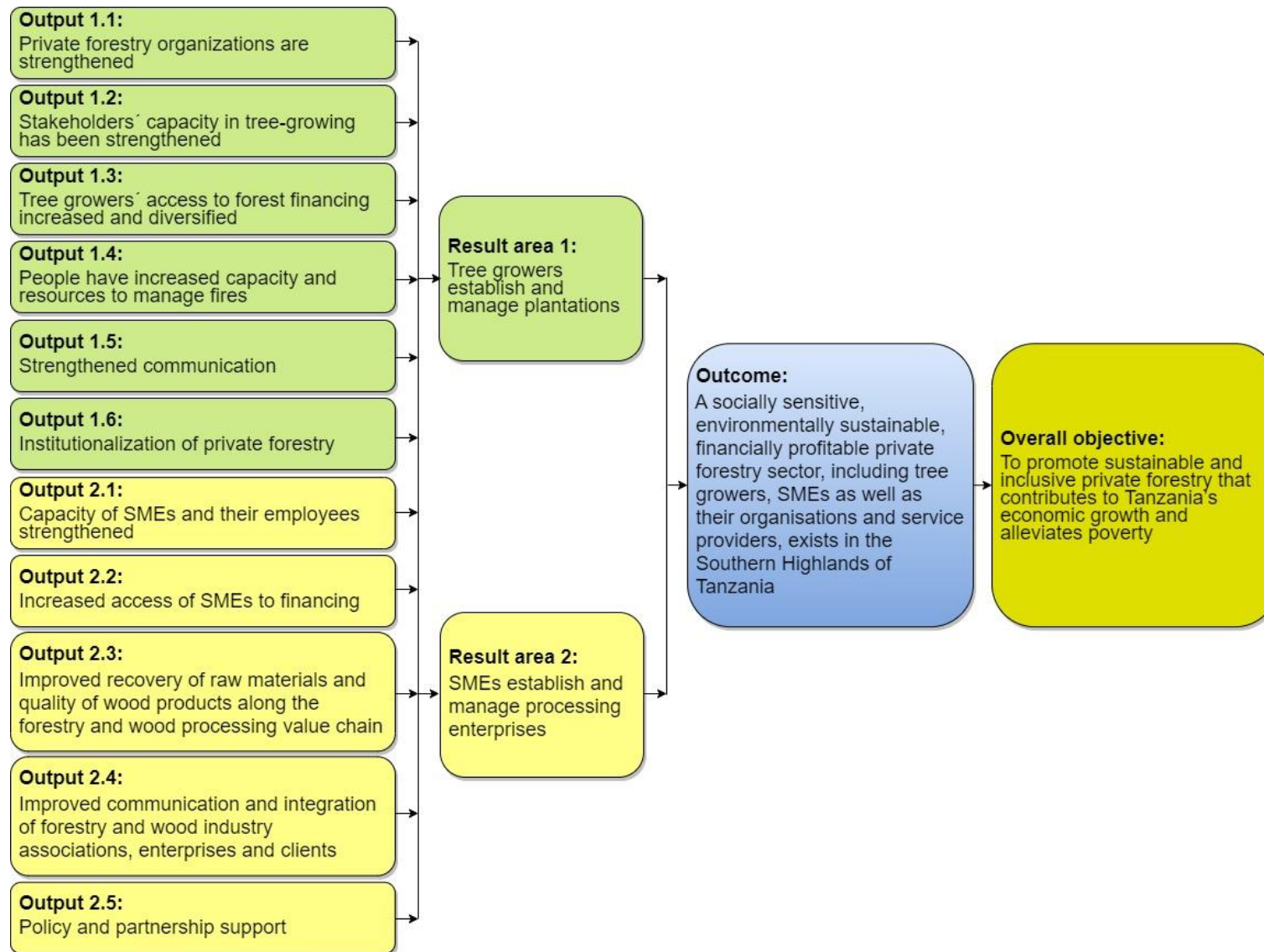
CONVERSION RATE

Euro 1 = TZS 2,700

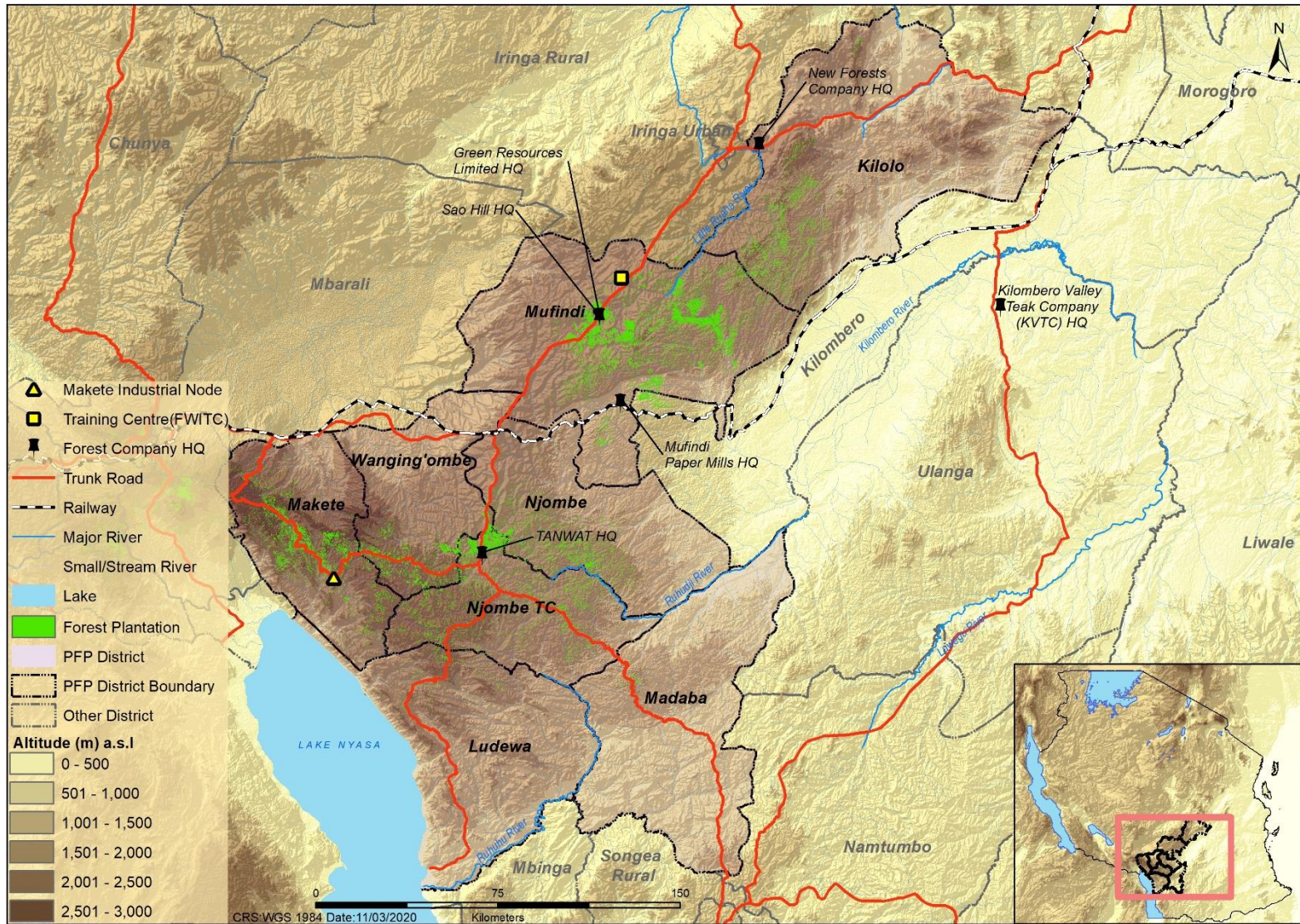
PROGRAMME FACT SHEET

Programme title:	Participatory Plantation Forestry Programme Phase 2 (PFP2)	
Sub-sectors:	Forestry, private sector development, wood industries, SME development	
Expected impact:	Sustainable and inclusive plantation forestry that contributes to Tanzania's economic growth and poverty alleviation	
Programme outcome:	A socially sensitive, environmentally sustainable, financially profitable private forestry sector, including tree growers, SMEs as well as their organisations and service providers, exists in the Southern Highlands of Tanzania	
Geographical coverage:	8 districts in the Southern Highlands of Tanzania in three regions: Iringa (Mufindi and Kilolo), Njombe (Makete, Njombe TC, Njombe DC, Ludewa, Wang'ing'ombe) and Ruvuma (Madaba)	
Duration:	Four years: From 1 November 2019 to 31 October 2023	
Programme financing:	Government of Finland 9.4 Million Euro (MEUR) Government of Tanzania 0.47 Million Euro (MEUR)	
Competent authorities:	<ul style="list-style-type: none"> - Ministry of Natural Resources and Tourism, Tanzania - Ministry for Foreign Affairs of Finland 	
Key stakeholders:		
1.	Rights holders	<ul style="list-style-type: none"> - Private tree growers - Vulnerable people - Urban-based tree growers - Small and Medium Entrepreneurs (SMEs) - Private forest companies - Nursery owners
2.	Duty bearers	<ul style="list-style-type: none"> - Forest and Beekeeping Division (FBD)/ Ministry of natural resources and tourism (MNRT) - Tanzania Forest Service Agency (TFS)/MNRT - Local governments (regional and district authorities) - Training institutions (Forestry Training Institute (FTI), Forest Industries Training Institute (FITI), Vocational Education and Training Authority (VETA), FWITC)
3.	Private sector organisations	<ul style="list-style-type: none"> - Tree Grower Associations (TGAs) - Tanzania Tree Growers Association (TTGAU) - Tanzania Forest Industries Federation-SHIVIMITA (Southern Highlands Forest Industries Association (SAFIA), Northern Forest Industries Associations (NOFIA) and Sao Hill Sawmillers Association (UWASA)) - Africa Forestry (AF)
4.	Other stakeholders	<ul style="list-style-type: none"> - Forestry Development Trust (FDT) - Sokoine University of Agriculture (SUA) - Tanzania Forest Research Institute (TAFORI) - Worldwide Fund for Nature (WWF) - We Effect - Tanzania Private Sector Foundation (TPSF) - Southern Agricultural Growth Corridor of Tanzania (SAGCOT) and its partners - Private secondary-processing companies (e.g., building, carpentry) - Service providers - Tanzania Forest Fund (TaFF)

PFP 2 RESULTS CHAIN



PROGRAMME AREA



EXECUTIVE SUMMARY

Background

The Participatory Plantation Forestry Programme (PFP 2) is a bilateral development aid programme established by the governments of Tanzania and Finland. It is the second phase of the Private Forestry Programme (PFP 1) and is designed to run from 1 November 2019 to 31 October 2023.

The programme increases rural income by promoting the commercial management of smallholder plantations and wood-processing enterprises. It adds value along the entire forest-product value chain, from improving the selection, quality, and vigour of planting material to introducing innovative, high-value wood products. It is also introducing and institutionalising vocational training in plantation forestry and wood-processing.

PFP 2 is set to operate in 8 districts of three regions: Iringa (Mufindi and Kilolo), Njombe (Makete Njombe town council, Njombe, Ludewa and Wang'ing'ombe) and Ruvuma (Madaba). Within this overall area the programme facilitates development of three potential forest industry clusters (Mafinga, Njombe and Makete forest industry clusters), each led by a Forest Industry Cluster Coordinator (FICC).

This three-month quarter progress report covers the second quarter from 1 October to 31 December 2020, of the second Tanzanian financial year of the Participatory Plantation Forestry Programme (PFP 2). This report presents updates and recommended changes to the 2020/2021 annual work plan (AWP) and results-based management framework (RBMF) that for approval by the competent authorities and programme steering committee (PSC). This progress report however still follows the 2020/2021 AWP and RBMF endorsed by the second PSC meeting on 14 July 2020.

Resources and Finance

In this second quarter, the programme allocated a total budget of Euro 787,125. The total expenditure for the reporting period was Euro 676,805 equivalent to 86% of the allocated budget. Postponement of the Njombe and Makete forest industry clusters regional inception workshop contributed to the under expenditure.

By the end of the reporting period, a total of Euro 1,188,454 had been spent by the programme during the 6-month period from 1 July to 31 December 2020. This was equivalent to 37.3 % of the total allocated budget for the 2020/2021 AWP period.

Delivery on results

The programme managed to plan 2 cross cutting inception workshops to introduce PFP 2 and participatory planning at regional and district level. By the reporting period, the programme managed to execute the Mafinga forest industry cluster inception workshop on 17 and 18 December 2020. The Njombe and Makete forest industry inception workshop was set to be implemented on 28 and 29 January 2021.

Also, the programme managed to organise and execute 2 district level cross cutting workshops: A workshop providing baseline studies feedback and planning way forward with council management team (CMT) in Makete district on 4 December 2020 and another workshop for linking SMEs with tree growers on 5 and 6 December 2020.

Overall, the programme managed to conduct and participate in a total of 68 events: 10 workshops events and 58 meetings during the reporting period.

The summary below provides progress of each activities identified in 2020/2021 AWP. The description highlighted green means the activity achieved, yellow means the activity has been initiated/on progress and red means no progress made during the reporting period.

2020/2021 AWP activities		Description
AWP code	Activity	
Inception phase activities carried to implementation phase		
3.2.1	Programme Document revised and approved	Baseline studies completed in Makete districts, the RBMF finalised including target set and the baseline value updated. Programme document remained to be finalised upon approval of the recommended updates of the RBMF.
3.2.2	Familiarization of programme management team and stakeholders	A total of 67 cross cutting and thematic meetings and/or workshops conducted and participated by the programme to introduce PFP 2 and all-inclusive participatory discussions and engagements.
3.2.3	Development of MoUs with districts and partners	MoU with the NLUPC drafted for approval. District and other partners MoU were planned to be executed in the next quarter.
3.2.4	Establishment of annual service provision contracts	A service provision contract with TTGAU negotiated and submitted to QAT, waiting for approval.
3.2.5	Development of PFP 2 communication strategy	Communication service provision ToRs drafted and recommended to follow normal procurement procedure hence to be advertised for tendering in the next quarter.
3.2.6	Development of monitoring and evaluation plan for PFP 2	The M&E plan drafted and approved as per PIM.
Result 1 Tree growers establish and manage plantations		
Output 1.1: private forestry organisations are strengthened		
1.1.1	Forestry cluster support to forest rich villages in Makete	23 villages in Makete selected, Participatory resource mapping initiated in 23 villages and the TGA establishment guideline drafted for approval.
1.1.2	Support in woodlot management planning	No progress made To be implemented in the next quarter
1.1.3	Capacity building to support TGA establishment	No progress made To be initiated in the next quarter
1.1.4	Forestry cluster development in Njombe and Mafinga	46 villages in Mafinga and Njombe forest industry cluster visited in collaboration with TTGAU and district government
1.1.5	Support to PFP 1 TGAs	A performance-based contract with TTGAU drafted for approval by the PSC.
1.1.6	Support to lead TGAs	No progress made To be initiated in next quarter
Output 1.2: Stakeholders' capacity in tree-growing has been strengthened		
1.2.1	Familiarizing village people, TGA leaders and facilitators	115 village leaders in Makete participated in awareness raising events
1.2.2	Training of tree growers, farmers and wood processors	No progress made To be implemented in the next quarter
1.2.3	Field days and exchange visits	No progress made To be implemented in the 3 rd and 4 th quarter
1.2.4	FWITC accreditation and registration	VETA conducted first inspection and registration forms submitted to BRELA
1.2.5	VETA 1-2-3 Forestry and Wood Processing curricula and training material development	Not accredited yet Follow up progressed
1.2.6	Compensation to tree growers	No progress made In the next AWP
1.2.7	Assessment of employment opportunities	Assessment completed in Makete forest industry cluster
1.2.8	Internship programme to expand service provisions	No progress made To be implemented between 3 rd and 4 th quarter
1.2.9	TGA tree seed orchards management	2 seed orchards stakeholders meetings conducted and the MoU to be completed in the next quarter
Output 1.3: Tree growers' access to forest financing increased and diversified		
1.3.1	VSLA/VICOBA evaluation	No progress made To be implemented between 3 rd and 4 th quarter
1.3.2	Support establishment of carbon forestry project	No target for AWP 2020/21

2020/2021 AWP activities		Description
AWP code	Activity	
1.3.3	External forest finance	No target for AWP 2020/21
1.3.4	Auditing MFA Out-grower Support Programme	TTGAU audit report completed and submitted. NFC and KVTC OSP data collection were on progress
Output 1.4: People have increased capacity and resources to manage fires		
1.4.1	Establish landscape level land use planning model	No progress made To be implemented in the next quarter
1.4.2	Extension services to prevent forest fires	No progress made To be implemented in the next quarter
Output 1.5: Strengthened communication		
1.5.1	Disseminate objectives and outcomes of PFP 2	Mafinga forest industry cluster inception workshop executed
1.5.2	Establish platform for regular meetings with stakeholders	No progress made To be implemented in the next quarter
1.5.3	Maintaining PFP website	No visitors/hits recorded because the website was under maintenance
1.5.4	Establishment of Forest and Market Information Systems	The market system assessment study was in final stages to be completed.
Output 1.6: Institutionalization of private forestry		
1.6.1	Integration of PFP activities in district work plans	The programme organised 1 workshop and 3 district meetings to integrate district works with PFP 2
1.6.2	Facilitate issuing of CCROs to households	District trainings on MAST technology planned although not executed since most district officials were heading for holiday breaks
1.6.3	Define criteria for new VLUPs and facilitate preparation	MoU with NLUPC drafted for approval
1.6.4	Study on vulnerability inclusiveness	The study completed and PFP 2 vulnerability definition drafted to ensure inclusion. HRBA subjected to comments by the PSC hence not yet approved.
1.6.5	Define investment profiles for plantation establishment	No target for 2020/2021 AWP
Result 2 SMEs establish and manage value-adding processing enterprises		
Output 2.1. Capacity of SMEs and their employees strengthened		
2.1.1	FWITC development and training provision	Mobile training unit items procured expected to arrive on February 2021. Clearance logistics to be completed in March 2021. The carpentry workshop is operational
2.1.2	Facilitate implementation of FWITC business plan	Support to FWITC progressed
2.1.3	Demonstration of appropriate forestry and wood processing technologies	No progress made To be initiated in the next quarter
2.1.4	Develop curricula for forest products for level 1-2-3	No progress made Suggested to be removed for PFP 2 interventions
2.1.5	Encourage participation of women, youth, and vulnerable groups	As a result of awareness raised, 45 students from Lungemba community development college (80% female) visited PFP 2 and FWITC on 30 October 2020
2.1.6	Awareness raising of SMEs in company responsibilities	Discussed on programme organised meetings and workshops
Output 2.2. Increased access of SMEs to financing		
2.2.1	Support SMEs in preparing business plans	PFP 2 staff trained in business plan preparation and a service provision contract to support SMEs in business plan drafted for approval and tendering.
2.2.2	Linking SMEs and financial institutions	In 1 programme organised workshop, SMEs linked with financial institutions
2.2.3	Supporting SMEs in sourcing global investment funds	No target for AWP 2020/21
Output 2.3. Improved recovery of raw materials and quality of products along the value chain		
2.3.1	Development and deployment of log and sawn timber grading	The log and sawn timber sorting and grading gazetted by GN No. 882 and published on 9 October 2020. Discussed in Mafinga forest industry cluster inception workshop
2.3.2	Support wood industry sector for sustainable raw material procurement	Incorporated in 2 workshops organised by the programme
2.3.3	Development of appropriate forest and wood processing technologies	Items for mobile training unit procured and discussed during Mafinga forest industry cluster
2.3.4	Product development and improved use of wood waste	Afri-furniture design project conducted its first steering meeting on 15 December 2020. Also, they were finalising the market and value chain actor assessment study

2020/2021 AWP activities		Description
AWP code	Activity	
Output 2.4. Improved communication and integration of forestry and wood industry associations, enterprises, and clients		
2.4.1	Awareness raising in utilization of forest and wood products	Incorporated in programme organised workshops and meetings. This includes all 67 events in the second quarter
2.4.2	Establish a strategy for forest information systems	No progress made The FMIS is not yet established
2.4.3	Accomplish and synchronize FMIS and MaIS	No progress made The FMIS and MaIS are not yet established
2.4.4	Dissemination of FMIS and MaIS	No progress made The FMIS and MaIS are not yet established
2.4.5	PFP's Industrial Node development	Charcoal metal kiln production piloted in LUMAKI villages and Ilindiwe village. PFP 2 staff trained on forest industry cluster development
Output 2.5. Policy and partnership support		
2.5.1	Facilitation of dialogue and liaison platform	Discussed in programme organised events Programme participated in the TNBC national level meeting
2.5.2	Association development in wood industry sector	No progress made To be initiated in the next quarter
2.5.3	Facilitation and enforcement of HRBAs in PFP 2 implementation	PFP 2 staff trained in HBRA issues OSHA included in all PFP 2 training provision and extension services

Planned activities

During the next quarter, the programme is planning on the following:

- Procurement and implementation of the SMEs service provision to:
- Conduct training needs assessment for the SMEs in Makete
- Support tree growers in Makete in preparation of woodlots management plans
- Implement the regional; Njombe and Makete forest industry clusters inception workshop on 28 and 29 January 2021
- Implement a participatory district and town council planning for the 3 town and 7 district council
- To agree with 3 town and 7 district councils on villages and human resource sharing for PFP 2 implementation
- Draft and signing of 10 MoUs with 3 town councils and 7 district councils
- Drafting and signing MoU with stakeholders in seed orchards development
- Completion of SMEs and woodlot assessment concept note and plan for the remaining Njombe and Mafinga forest industry cluster
- Completion of HRBA situational assessment concept note and plan for the remaining Njombe and Mafinga forest industry cluster
- Completion of the procurement for the mobile training unit items
- Organise the fourth programme steering committee meeting
- Completion of the service provision for forestry and market information systems service delivery
- Completion and implementation of the TGAs service provision contract with TTGAU

1. PROGRAMME DESCRIPTION

The Private Forestry Programme - PFP 1 (Now changed its name to Participatory Plantation Forestry Programme – PFP 2) started in January 2014. It was to run for four years, extended by one year to December 2018, and then further extended to 30 April 2019, by which time the original budget had been spent. The first phase was followed by a two-month bridging phase that required additional funding, which was provided by Forestry and Value Chains Development programme (FORVAC).

PFP 2 is a four-year continuation of the five-year and four-month PFP 1. It supports smallholder plantation forestry and wood-processing industries in the Southern Highlands of Tanzania. It started on 1 November 2019 and is expected to end on 31 October 2023.

Planning for PFP 2 commenced with formulation and appraisal missions conducted during October 2017 and May 2018, respectively. The draft PD that resulted from these consultant inputs was published by the Ministry for Foreign Affairs of Finland (MFA) on 15 May 2019.

The agreement between the government of Finland (GoF) and the government of Tanzania (GoT) on cooperating on PFP 2 was signed on 18 July 2019. GoT, through the Ministry of Finance and Planning (MoF) and Ministry of Natural Resources and Tourism (MNRT), and the GoF, through the MFA and the embassy of Finland in Tanzania, guided the mobilisation of resources and the practical arrangements needed to start implementing the programme immediately, beginning on 1 November 2019.

The overall objective of PFP 2 is the same as that of PFP 1: “To promote sustainable and inclusive private forestry that contributes to Tanzania’s economic growth and alleviates poverty”. PFP 2 aims to consolidate PFP1’s achievement by shifting from direct operations to facilitation, inclusiveness and the building of sustainability for a long-term impact.

To ensure that the plantation forestry sector in Tanzania is all-inclusive, PFP 2 was formulated with a human rights-based approach (HRBA), which, in practice means, the realisation of human rights as PFP 2 results. Furthermore, the PFP 2’s HRBA approach will emphasise inclusive, participatory and non-discriminatory processes which are transparent and enhance accountability. PFP 2 strives to enhance the capacities of rights-holders, duty-bearers and, when relevant, other responsible actors. It has conducted a comprehensive human rights, gender, and vulnerability baseline assessment to facilitate the participation and inclusiveness of all programme stakeholders in implementation.

Studies conducted by both PFP 1 and the Forest Development Trust (FDT) over the last five years have improved understanding of the sector. Key findings include the following.

- a. Collectively, smallholders raise the largest area of forest plantations (>150,000 ha) of any producer in Tanzania and have the most scope for expansion.
- b. Collectively, SMEs produce the most sawn wood of any producer in Tanzania.
- c. Both smallholders and SMEs contribute greatly to livelihoods in the Southern Highlands, yet they are underserved in training, extension, infrastructure, financial services, research and innovation support, and, in consequence, do not achieve their potential.
- d. Forest value chains are based on too few tree species of unknown provenance. Both the FDT and PFP 1 have made major contributions to tree improvement but these contributions are not sufficiently institutionalised.
- e. PFP 1 identified six potential forest industry clusters. The three with the most medium-term development potential were Mafinga, Njombe and Makete. The forest industry clusters have many stakeholders, including smallholders and company and government growers; private transporters; non-government organisations (NGOs); and the ministries, departments and agencies of MoF, MNRT, Ministry of Education, Science and Technology (MoE), president’s office regional administrative and local government (TAMISEMI) and VETA. However, since these stakeholders are not locally coordinated or optimised to work together, there are many inefficiencies in the sector, such as those listed below:
 - Pine is planted when the market demands eucalyptus.

- The district governments of Mufindi, Mafinga, Kilolo, Makete, Njombe town council, Njombe district council, Ludewa, and Wang'ing'ombe are largely financed by taxing forestry, yet their reinvestment in commercial forestry extension is suboptimal
 - Impromptu taxes that cause businesses to fail are imposed.
 - Government land is left idle when it could be used productively.
- f. The most cost-effective way to reduce poverty through production forestry and sawmilling in the Southern Highlands is to improve forest industry cluster coordination and enhance the performances of both smallholders and SMEs.
 - g. Makete District in Njombe Region has more smallholder plantation forestry than any other district, has some of the best growing conditions, and, until recently, has suffered from impoverishment due to its remoteness and lack of services. Rapid progress in rural electrification and road construction are, however, opening opportunities for rural industrialisation while at the same time improving market access.

PFP 2 focuses on cluster coordination and on groups of smallholders in plantation-rich villages where it believes it can have greatest impact on poverty reduction by improving plantation forestry and wood processing.




This report provides detailed information on the achievements and progress made during the second quarter of the 2020–2021 annual work plan (AWP) period. It covers the period from 1 October to 31 December 2020. The total MFA budget for the quarter period was Euro 787,125 where out of it, Euro 676,805 was the actual expenditure.

Although, the programme management team (PMT) propose some refinement to the RBMF to be approved by the fourth programme steering committee (PSC), this report still follows the revised result-based management framework (RBMF) endorsed by the 2nd PSC in July 2020, which was updated during the preparation of the 2020/2021 AWP and budget.

2. PROGRESS TOWARDS THE ACHIEVEMENT OF THE EXPECTED RESULTS

This section provides achievements progress of the activities and outputs targets set in the 2020/2021 annual work plan (AWP). Where appropriate the status of and progress made in each of the achieved activities are illustrated and rated as described in Table 2.1.

Table 2.1 Ratings used for the achievement statuses of activities performed during the period October – December 2020

Colour highlight	Description
	The activity completed
	The activity initiated and partially completed or completed with minor deviations or is in progress.
	The activity was not conducted or not initiated or there were major deviations.

2.1 Broad programme management arrangements update

The programme managed to update baseline values and set targets for the indicators in the updated result-based management framework (RBMF) as appended in Annex 1. The update and changes made to the RBMF are described in detail under section 2.4 and Annex 2.

Previous programme arrangement was to gain progress in Makete forest industry cluster during the 2020/2021 AWP and extend to Mafinga and Njombe forest industry clusters in 2021/2022 AWP. Hence, the baseline studies were set to be rolling exercise, to be implemented in Makete and then extend gradually to Mafinga and Njombe forest industry clusters.

But it was recommended and agreed during the third PSC meeting to priorities and finalise baseline studies to the remaining Mafinga and Njombe forest industry clusters.

The programme-initiated planning to execute the light version of the baseline survey in Njombe and Mafinga forest industry clusters. The plan is to start mobilising the human resources and initiate remaining baseline studies during the third quarter.

2.2 Result 1 Tree growers establish and manage plantations

2.2.1 Output 1.1 private forestry organisations are strengthened

2020/2021 AWP		AWP target	2 nd Quarter progress	Achievement status
Code	Activity			
1.1.1	Forestry cluster support to forest rich villages in Makete	i) 23 villages in Makete selected and verified for PFP 2 intervention	23 villages in Makete selected and verified for PFP 2 interventions	Achieved
		ii) Participatory forest resources assessment done for 23 villages in Makete	Initiated during the baseline studies in all 23 selected villages in Makete	Initiated
		iii) 18 TGAs established	The programme managed to draft the TGA establishment guideline to guide TGA formation process	Initiated
1.1.2	Support in woodlot management planning	i) 3 woodlot management plans prepared in each of the 23 villages	No progress made	Not initiated

2020/2021 AWP		AWP target	2 nd Quarter progress	Achievement status
Code	Activity			
		ii) In 6 villages at least 80% of woodlots covered with management plans	No progress made	Not initiated
1.1.3	Capacity building to support TGA establishment	All 23 TGA leaders and executive committee members trained in TGA management and administration	No progress made	Not initiated
1.1.4	Forestry cluster development in Njombe and Mafinga	Njombe and Mafinga Forest Industry Clusters established for operations	20 and 26 villages in Mafinga and Njombe FIC* visited for PFP 2 implementation	In progress PFP to agree with district to collaborate in interventions
1.1.5	Support to PFP 1 TGAs	PFP 1 investments in smallholders' plantations will be protected and managed	A performance-based contract with TTGAU negotiated and drafted	Initiated
1.1.6	Support to lead TGAs	6 "TGAs of Excellency" will be established for demonstration purposes	No progress made	Not initiated

*Forest industry cluster

1.1.1 Forestry cluster support to forest rich villages in Makete

After the baseline studies in Makete, PFP 2 together with district agreed and selected 23 villages in Makete. Ikonda, Tandala, Iwawa and Ujuni villages were replaced with Ipepo, Ivilikinge, Kidope and Ipelele villages due to low potentiality in forestry resources (Table 2.2). During the reporting period no progress made with preparations of memorandum of understanding (MoU) with both districts and village governments and it is set to be completed in the third quarter.

Table 2.2 PFP 2 selected villages in Makete.

Village Name	BOPs training	Previously formed TGA	Previously formed VLUP	Previously formed VSLA group
Management unit 1				
Ibaga	Yes	UWAMI	Yes	No
Ilindiwe	Yes	Upendo group	Yes	Yes ¹
Malembuli	Yes	None	Yes	Yes
Mang'oto	Yes	KIWAHIHAMA	No	No
Usungilo	Yes	None	Yes	Yes ²
Management unit 2				
Ipepo	Yes	None		
Ihela	Yes	Yes	Yes	Yes
Lupalilo	Yes	None	No	No
Mago	Yes	Kiwamima	Yes	No
Kisinga	Yes	None	No	No
Management unit 3				
Nkenja	Yes	None	No	No
Isapulano	Yes	None	No	No
Luvulunge	Yes	None	No	No
Ivilikinge	Yes	None	N/A	No

¹VSLA group formed by the TTGAU.

²VSLA group formed by the TTGAU.

Village Name	BOPs training	Previously formed TGA	Previously formed VLUP	Previously formed VSLA group
Management unit 1				
Ivalalila	Yes	None	N/A	No
Ludihani	Yes	None	N/A	No
Ndulamo	Yes	None	N/A	No
Management unit 4				
Bulongwa	Yes	None	No	No
Mwakauti	Yes	None	No	No
Iniho	Yes	None	No	No
Kidope	Yes	None	No	No
Lumage	Yes	None	No	No
Ipelele	Yes	None	No	No

No progress made on participatory resources mapping, apart from the mapped woodlots during the baseline survey.

On 10 December 2020, the programme organised the validation workshop with district official from Makete, Njombe and Mafinga forest industry cluster to discuss on the drafted TGA establishment guideline. Participants received the chance to go through the guideline item by item and their recommendations were incorporated in the final draft submitted for approval by the competent authorities and the PSC.

No TGAs established during the reporting period although the TGA establishment guideline drafted and submitted for silent approval by the PSC³.

1.1.2 Support in woodlot management planning

No progress made during the reporting period on this aspect. The programme will start implement the activity during the third quarter.

1.1.3 Capacity building to support TGA establishment

During the reporting period, no trainings provided on TGA establishment and development to strengthen TGAs.

1.1.4 Forestry cluster development in Njombe and Mafinga

The Forest Industry Cluster Coordinator (FICC) posted to Mafinga and Njombe in September 2020 as per 2020/2021 AWP.

During October 2020, FICC Njombe and Mafinga continued to establish communication with district and village government in 46 villages of 5 district council and 3 town council. The full-scale plan of activities to 2021/2022 to be developed and finalised in the next quarter.

Both FICC Njombe and Mafinga in cooperation with TTGAU and district government conducted a verification assessment of forest rich villages in Mafinga, and Njombe forest industry clusters as described in Table 2.3.

A total of 46 meetings conducted at village level during verification of villages for PFP 2 interventions in both Mafinga and Njombe forest industry clusters. During the 3rd quarter, a participatory district planning workshop will be organised to agree with district on villages for PFP 2 interventions and develop draft districts memorandum of understanding (MoUs).

³ Guideline for TGA establishment and strengthening:
<https://www.privateforestry.or.tz/resources/view/tga-guideline>

Table 2.3 List of visited PFP 2 pre-selected villages in Mafinga and Njombe forest industry cluster

Village visited in Mafinga forest industry cluster		Village visited in Njombe forest industry cluster	
1	Nundwe	1	Iboya
2	Vikula	2	Yakobi
3	Wamimbalwe	3	Kifanya
4	Ugesa	4	Ihanga
5	Mwitikilwa	5	Itipula
6	Itona	6	Lwangu
7	Kihanga	7	Lilombwi
8	Ikwega	8	Liwengi
9	Mkalala	9	Matola
10	Itulituli	10	Mtila
11	Ludilo	11	Madobole
12	Ihefu	12	Kitulila
13	Ikanga	13	Kidegembye
14	Mlevelwa	14	Havanga
15	Ihanu	15	Image
16	Kilosa	16	Ikondo
17	Sawala	17	Nyave
18	Kitiru	18	Iyembela
19	Igowole	19	Wanginyi
20	Ikongosi	20	Lyalalo
		21	Isoliwaya
		22	Mikongo
		23	Matembwe
		24	Lupanga
		25	Madope
		26	Lima

1.1.5 Support to PFP 1 TGAs

The programme discussed with TTGAU on support to PFP 1 TGAs and agreed PFP 2 to facilitate TTGAU under performance-based contract that was negotiated and drafted for approval by the PSC. By the reporting period the contract was not yet approved.

1.1.6 Support to lead TGAs

The TGA formation and strengthening guideline developed and the TGA formation process will be initiated during the third quarter. Hence, the leading TGAs were not identified during the reporting period.

2.2.2 Output 1.2. Stakeholders' capacity in tree-growing has been strengthened

2020/2021 AWP activity		AWP target	2 nd Quarter progress	Achievement status
Code	Activity			
1.2.1	Familiarizing village people, TGA leaders and facilitators	200 village leaders, TGA leaders / facilitators and influencers participated in awareness raising events	A total of 115 village leaders in Makete participated in awareness raising events	In progress
1.2.2	Training of tree growers, farmers and wood processors	9 training courses for 10 people organized in 6 villages in Makete. Total of 54 courses organized and 540 people trained	No progress made	Not initiated
1.2.3	Field days and exchange visits	700 people participated on exchange visits	No progress made	Not initiated
1.2.4	FWITC accreditation and registration	FWITC accredited and registered with VETA Tanzania	The process for accrediting FWITC initiated	In progress

2020/2021 AWP activity		AWP target	2 nd Quarter progress	Achievement status
Code	Activity			
1.2.5	VETA 1-2-3 Forestry and Wood Processing curricula and training material development	i) Two-year VETA 1-2-3 Forestry and Wood Processing Attendant curricula accredited by VETA Tanzania	No progress made	Follow up progressed
		ii) A plan to prepare training materials for the above two curricula prepared	No progress made	Not initiated
1.2.6	Compensation to tree growers	Compensation made to those tree growers affected and report prepared from compensations	No progress made	Not initiated
1.2.7	Assessment of employment opportunities	Baseline study report prepared	The study incorporated in completed baseline studies in Makete.	In progress Completed in Makete
1.2.8	Internship programme to expand service provisions	PFP 1 facilitators assessed	No progress made	Not initiated
1.2.9	TGA tree seed orchards management	Management roles and responsibilities agreed with actors responsible and seed orchards provided with needed protections	2 seed orchards stakeholders meetings conducted.	In progress MoU for stakeholders on responsibilities was not yet update and refined

1.2.1 Familiarizing village people, TGA leaders and facilitators

The programme managed to raise awareness and extension services in Makete, on practical silvicultural operations and best operating practices in forest plantations management. A total of 115 village and hamlet leaders participated in the events that includes: 69 hamlets leaders, 23 village executive officers and 23 village chairpersons.

By the reporting period, the study on forestry value chain and forest products markets was finalised and published in the programme website⁴.

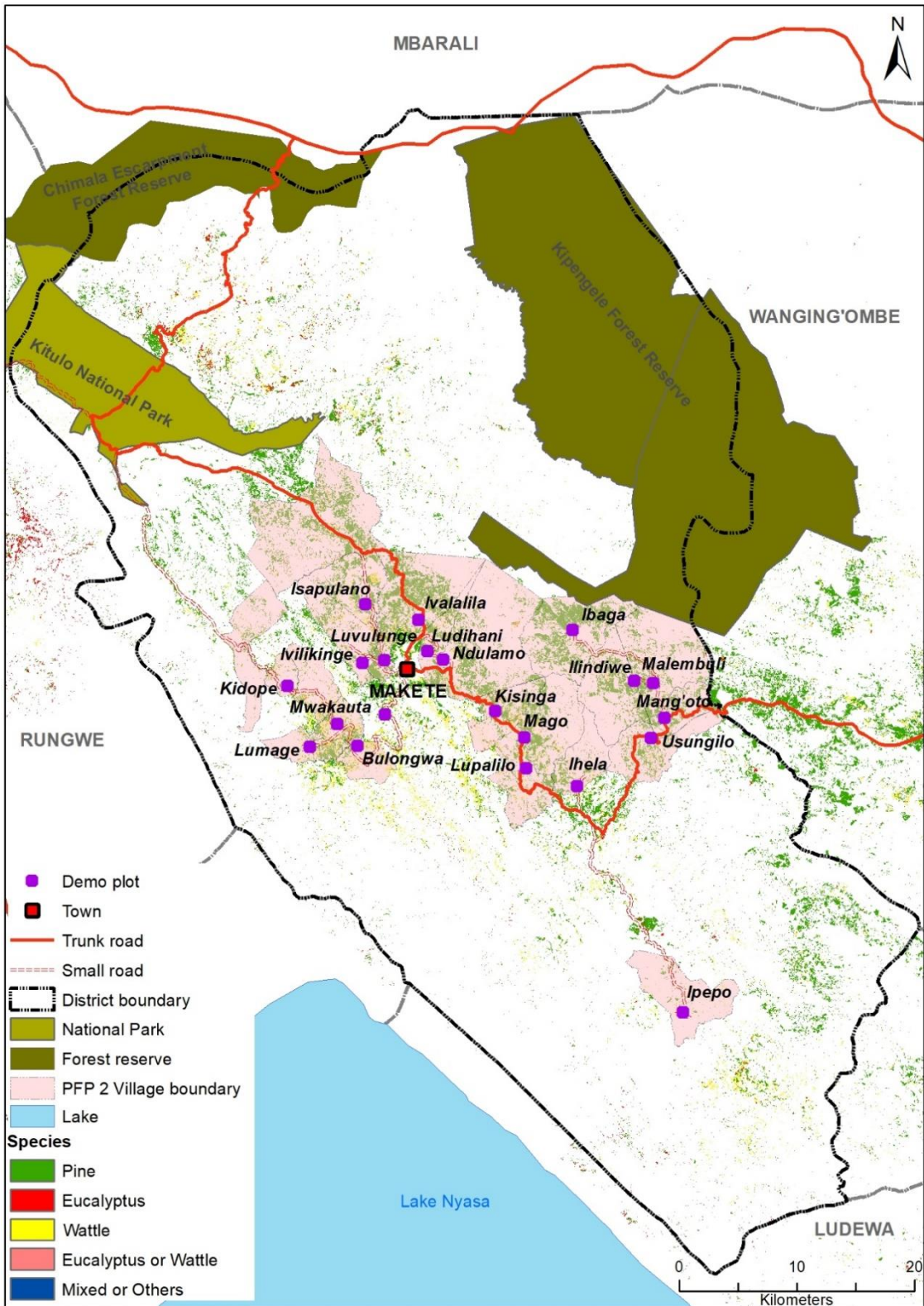
During the reporting period, the programme managed to establish a total of 19 woodlots demonstration plots as described in Table 2.4 and mapped in Figure 2.1. A participatory approach for establishing the demonstration woodlots/plots implemented including villagers, district officials and PFP 2 staffs.

Table 2.4 Established demonstration woodlots in Makete with ownership type

Demo plots name (by village name)	Ownership	Area (ha)	
1	Bulongwa	KKKT church	0.3
2	Ibaga	Ibaga primary school	0.94
3	Ihela	Ihela primary school	0.28
4	Iindiwe	Iindiwe primary school	0.74
5	Isapulano	KKKT church	0.86
6	Ivalalila	Ivalalila primary school	0.42
7	Ivilikinge	KKKT church	5.34
8	Kidope	Private (smallholder tree grower)	0.09
9	Kising'a	RC church	0.9
10	Ludihani	Village government	0.84
11	Lumage	Village government	1.02
12	Lupalilo	Private (smallholder tree grower)	0.31
13	Luvulunge	Private (smallholder tree grower)	0.33
14	Mago	Mago primary school	0.45
15	Malembuli	Malembuli primary school	0.054
16	Mang'oto	Mang'oto primary school	0.23
17	Mwakauta	Mwakauta primary school	0.18
18	Ndulamo	Village government	3.55
19	Usungilo	Usungilo primary school	0.31
Total area			16.24

⁴ Makete Forest Resource Market Systems Assessment:
<https://www.privateforestry.or.tz/resources/view/makete-forest-resource-market-systems-assessment>

Figure 2.1 Spatial distribution of the established demonstrations woodlots in Makete



1.2.2 Training of tree growers, farmers and wood processors

During October to December 2020 period the programme was finalising baseline survey and identifying tree growers, farmers and wood processor ready to receive programme support. Hence trainings to be initiated during the third quarter.

1.2.3 Field days and exchange visits

To be initiated during the 3rd and 4th quarter of this AWP period. The programme was finalising baseline studies.

1.2.4 FWITC accreditation and registration

In reference to resolutions and recommendation made by the PSC on 3 December 2020, the programme initiated the process of certifying and accrediting FWITC under VETA. In December 2020 first inspection was conducted to FWITC by VETA and the registration application submitted to business registration and licensing agency (BRELA).

The permanent secretary (PS) Ministry of Natural Resources and Tourism (MNRT) visited FWITC on 8 September 2020 and showed interest on possibility for MNRT to procure the site. PS-MNRT communicated to the Ministry of Lands, Housing and Human Settlements Development to re-evaluate the FWITC land.

By the end of the reporting period, FWITC land re-evaluation was completed, and the evaluation report submitted to MNRT. Preliminary results from the report shows the value decreased to TZS 670,000,000 (equivalent to Euro 262,745) from an estimate of 1.1 billion TZS.

1.2.5 VETA 1-2-3 Forestry and Wood Processing curricula and training material development

By the reporting period, the forestry and wood processing curricula were not yet accredited, and it is expected to be accredited in the third quarter of 2020/2021 AWP.

1.2.6 Compensation to tree growers

Under the “do-no-harm” principle we are obliged to compensate for damage done during the PFP 1 as a continuation programme. Upon need assessment to tree growers received seedlings that were affected by “Pitch canker” the programme will compensate.

It was already too late for this planting season, but upon need arrangement will be made in the future.

1.2.7 Assessment of employment opportunities

The assessment was incorporated in the completed baseline studies in Makete forest industry cluster. During the reporting period, the reports were finalised, submitted to PSC and the competent authorities and the approval process was ongoing.

Preliminary findings show the forestry value chain employment opportunity is estimated to range between 3,000 to 4,000 jobs.

Overall, the studies are completed in Makete forest industry cluster and to be extended to Mafinga and Njombe forest industry cluster in the third and fourth quarter of 2020/2021 AWP.

1.2.8 Internship programme to expand service provisions

No progress made by the programme during the reporting period on this aspect.

1.2.9 TGA tree orchards management

PFP 2, TFS and TTGAU continued to collaborate in development of programme supported seed orchards.

On 24 November 2020, PFP 2 together with TFS requested for immediate support from TAFORI to assess possible occurrence of pitch canker disease (*Fusarium circinatum*) in Mufindi Paper

Mill (MPM) and Idete/Holo seed orchards. Preliminary findings showed, it was not a pitch canker disease (*Fusarium circinatum*) and it was recommended by TAFORI to further assess the problem.

On 25 November 2020, TAFORI was requested to prepare a concept note for assessing all programme supported seed orchards in a meeting with PFP 2 and TFS (the meeting minutes were shared to TTGAU who did not manage to participate). It was agreed by TAFORI, the concept note for assessment of the disease occurrence in seed orchards to be submitted in the third quarter.

During the reporting period, the programme managed to organise 2 seed orchards stakeholders' meetings involving PFP 2, TFS and TTGAU. The first meeting was to discuss on the drafted seed orchard manual and the second one was to agree on planned activities and responsibilities among stakeholders for each seed orchard.

Also, the programme managed to facilitate and complete thinning at Idete/Holo seed orchards. In the third quarter, the programme will continue facilitating thinning at MPM seed orchards.

The programme negotiated with TTGAU and drafted a performance-based contract for continuation in supporting the TGA based seed orchards. By the reporting time, the contract was not yet approved.

2.2.3 Output 1.3. Tree growers' access to forest financing increased and diversified

2020/2021 AWP activity		AWP target	2 nd Quarter progress	Achievement status
Code	Activity			
1.3.1	VSLA/VICOBA evaluation	PFP 1 VSLA group evaluation completed	No progress made	Not initiated
1.3.2	Support establishment of carbon forestry project	No target for AWP 2020/21		
1.3.3	External forest finance	Linkages and co-operation established to UN and FAO	No progress made	Not initiated
1.3.4	Auditing MFA Out-grower Support Programme	Audit report published	TTGAU audit report submitted. NFC and KVTC OSP data collection were on progress	On progress

1.3.1 VSLA/VICOBA evaluation

The programme will conduct this evaluation either in 3rd or 4th quarter. Also, it can be done under a performance-based contract through TTGAU.

1.3.2 Support establishment of carbon forestry project

Due to change of plans to finalise baseline in Mafinga and Njombe forest industry clusters, the programme suggested this activity to be implemented in the next AWP.

1.3.3 External forest finance

Due to change of plans to finalise baseline in Mafinga and Njombe forest industry clusters, the programme suggested this activity to be implemented in the next AWP.

1.3.4 Auditing MFA Out-grower Support Programme

MFA through embassy of Finland in Dar es salaam, appointed the programme to evaluate and audit the out-grower support (OSP) provided by MFA through TTGAU, NFC and KVTC (Table 2.5).

By the reporting period, the TTGAU audit report was finalised and submitted to the embassy of Finland in Dar es salaam. NFC and KVTC audit was on progress with data collection.

Table 2.5 Summary of the OSP audit and evaluation

Categories	Statistics
KVTC	
Survey period	From 29 th November to 5 th December 2020
Place surveyed	Kilombero and Ulanga Districts
Surveyed	40 woodlots surveyed out of 46 established woodlots
TTGAU	
Survey period	From 9 th to 17 th December 2020
Place surveyed	7 District, 27 villages
Surveyed	73 woodlots from 68 beneficiaries in 6 Districts in 11 villages
NFC	
Survey period	From 7 th to 8 th then 18 th to 22 nd December 2020
Place surveyed	1 District, 18 villages
Surveyed	109 woodlots

2.2.4 Output 1.4. People have increased capacity and resources to manage fires

2020/2021 AWP activity		AWP target	2 nd Quarter progress	Achievement status
Code	Activity			
1.4.1	Establish landscape level land use planning model	Landscape-level planning supported in Ifinga and introduced in Makete	No progress made	Not initiated
1.4.2	Extension services to prevent forest fires	6 fire management training courses organized in PFP 2 focus villages in Makete	No progress made	Not initiated

1.4.1 Establish landscape level land use planning model

The activity to be addressed during development of the village land use planning. Currently, the programme drafted MoU with the NLUPC to be signed during 3rd or 4th quarter.

1.4.2 Extension services to prevent forest fires

Fire management training courses will be initiated during the 3rd quarter. In this reporting period the programme finalised baseline survey in Makete forest industry cluster.

2.2.5 Output 1.5 Strengthened communication

2020/2021 AWP activity		AWP target	2 nd Quarter progress	Achievement status
Code	Activity			
1.5.1	Disseminate objectives and outcomes of PFP 2	District governments involved in current PFP 2 AWP's understand the rationale for PFP 2 and are knowledgeable of its activities	The programme managed to organise two workshop events: - 1 workshop with Council Management Team in Makete district - 1 Mafinga forest industry cluster inception workshop	Initiated
1.5.2	Establish platform for regular meetings with stakeholders	TGAs have regular meetings with local government and SMEs	No progress made	Not initiated
1.5.3	Maintaining PFP website	PFP website hits doubled from PFP 1	No visitors/hits recorded since the website was under maintenance.	Initiated
1.5.4	Establishment of Forest and Market Information Systems	i) FMIS designed and functional	No progress made. Although, the collected baseline data will be the benchmark for designing the FMIS.	Not initiated
		ii) MaIS designed and functional	No progress made	Not initiated
		iii) Awareness raised to TTGAU/TGAs on functionality of the FMIS	No progress made	Not initiated

2020/2021 AWP activity		AWP target	2 nd Quarter progress	Achievement status
Code	Activity			
		iv) At least 20 woodlot management plans completed	No progress made	Not initiated
		v) Forestry market assessed, and forestry value chain actors identified in Makete district	On progress	On progress Currently, the findings and recommendation are piloted and validated to stakeholders.
		vi) 3 participatory sum-up workshops organized to share information on forest value chain actors in the 3 PFP 2 forest industry clusters.	The programme incorporated the aspect in the organised: - 1 CMT workshop in Makete - 1 Inception workshop in Mafinga FIC	Initiated

1.5.1 Disseminate objectives and outcomes of PFP 2

The programme conducted its third PSC meeting, which was also the second in the current AWP period. The meeting was preceded with the field visits to Mufindi and Njombe PFP supported seed orchards and TGAs, as well as programme interventions such as visiting demonstration woodlots/plots in 3 of PFP 2 villages in Makete: Ihela, Luvulunge and Ibaga villages.

By the reporting time, the programme could not manage to organise a supervisory board (SvB) meeting. The meeting was supposed to be conducted in December 2020 as per the 2020/2021 AWP section 3.1.6. The meeting is rescheduled to be conducted in the fourth quarter in April 2021.

The 2020/2021 AWP and draft programme document that was published by Ministry for Foreign Affairs of Finland in May 2019, was uploaded to the updated programme website.

No progress made by the programme to organise the trade fair to raise the national awareness on the relevance of the forest sector.

The programme managed to prepare terms of reference (ToRs) for service provision to facilitate development of the programme communication strategy. This drafted ToRs submitted for approval to the competent authorities and programme steering committee (PSC), and by the reporting period it was not yet approved.

No progress made for developing a commercial tree growers and wood processor newsletter.

1.5.2 Establish platform for regular meetings with stakeholders

The programme will initiate implementing to establish and organising regular meeting with stakeholders during the 3rd quarter.

1.5.3 Maintaining PFP website

PFP 2 updated its programme management information system (MIS) to be accessible online via its network attached storage (NAS).

Also, the social media pages such as Instagram, Facebook and LinkedIn were created, and the contents are gradually uploaded. The programme will follow up on creation of the programme YouTube channel in reference to the updated regulations by the government of Tanzania.

The programme website was re-designed, and the design style approved by the third PSC meeting which recommended the programme to proceed with further updating. The MNRT forestry and beekeeping division's logo included at the top as it was instructed. By the end of the reporting period the content of the website still remained to be improved to match the PFP 2 objective.

1.5.4 Establishment of Forest and Market Information Systems

During the reporting period, data collected on smallholders' woodlots plantations from the baseline were cleaned and edited. Discussion to redesign the existed forest information system in PFP 1 initiated, although much work will be conducted in the fourth quarter.

The programme managed to finalise the assessment report of the forestry markets and value chain actor in the southern highland that was approved by the competent authorities and published in the programme website.

The findings and recommendations from the study of forestry markets and value chain actor in the southern highland validated and piloted to stakeholders, to obtain their views.

Also, the study will be extended to the remain programme areas as it was recommended from the 3rd PSC.

2.2.6 Output 1.6. Institutionalization of private forestry

2020/2021 AWP activity		AWP target	2 nd Quarter progress	Achievement status
Code	Activity			
1.6.1	Integration of PFP activities in district work plans	Mafinga, Makete and Njombe DC AWP include PFP 2 activities	The programme organised 1 workshop that included regional and district officials, and 3 planning meetings with districts	Initiated
1.6.2	Facilitate issuing of CCROs to households	i) District staff are trained on MAST technology for issuing CCROs	No trainings made Discussions initiated with district for trainings to be conducted in quarter 3	Initiated
		ii) Process for issuing CCROs is known to villagers	No progress made	Not initiated
		iii) At least 50 CCROs issued to vulnerable household/individuals	No progress made	Not initiated
1.6.3	Define criteria for new VLUPs and facilitate preparation	i) 7 new VLUPs established in Makete	The MoU with NLUPC drafted and submitted for approval.	Initiated
		ii) Train PLUM team on new VLUPs developments	No trainings made	Not initiated
		iii) VLUPs will be done through a participatory landscape level approach practice	No progress made	Not initiated
1.6.4	Study on vulnerability inclusiveness	i) A clear definition of vulnerability for PFP 2 intervention	The study completed and vulnerability definition developed.	Achieved The report submitted to PSC for approval.
		ii) Inclusiveness of vulnerable groups into PFP 2 AWP 2021/22 guaranteed with clear participation already in planning process	Vulnerable groups involvement ensured.	Being implemented
1.6.5	Define investment profiles for plantation establishment	No target for AWP 2020/21		

1.6.1 Integration of PFP activities in district work plans

The programme organised an inception workshop in Mafinga forest industry cluster for the detailed participatory planning. Various value chain actors of the forest sector participated including regional and district government, and they received a presentation explaining the rationale of PFP 2 to seek their fullest collaboration.

During the inception workshop, the programme realised that, PFP 1 achievements have already been included in the CCM ruling party manifesto (Ilani ya uchaguzi ya CCM) for 2020/2025

period under section 68 (Sub section g) page 113⁵. This ensures sustainability of programme interventions.

The programme together with Njombe regional and district government were organising a regional inception workshop for Njombe and Makete forest industry cluster that initially was planned to be conducted in December 2020. Unfortunately, it was postponed due to limitations resulted due to government leadership mobilisation after the general election. This inception workshop was therefore set to be conducted in the third quarter.

On 4 December 2020, the programme managed to organise 1 council management team (CMT) workshop in Makete district to provide feedback on the finalised baseline studies in Makete forest industry cluster, to get their views and discuss opportunities for collaboration in programme interventions.

Also, the programme managed to organise two days' workshop: on 5 and 6 November 2020 with SMEs, RLabs, TTGAU, AF and district official from Njombe, Makete and Mafinga forest industry clusters to discuss linking SMEs with tree growers and possibility for the tree growers to supply 2,500 tonnes of charcoal annually to MKAA ENDELEVU. The district government agreed to collaborate with the programme to ensure linkage between SMEs and tree growers.

1.6.2 Facilitate issuing of CCROs to households

A plan to train the district land surveyors in Makete district and Njombe region, on Mobile Application to Secure Tenure (MAST) developed to be implemented in December 2020. Implementation of the training was postponed to after the holiday break, in the third quarter.

1.6.3 Define criteria for new VLUPs and facilitate preparation

The NLUPC memorandum of understanding (MoU) drafted and submitted to the competent authorities and the PSC for approval. By the reporting period, the MoU was not yet approved or signed.

1.6.4 Study on vulnerability inclusiveness

The human-rights based approach (HRBA) study that included household progress out of poverty index (PPI) score surveys finalised for approval. The study developed a vulnerability definition that aligns with PFP 2 intervention.

PFP 2's definition of vulnerable people includes "those who can potentially benefit from forestry market systems but who are simultaneously more likely or liable to face severe obstacles in enjoying equal benefits due to limited access to land, power, and a reliable source of income; poor health and disability; as well as lack of appropriate skills, social protection and sufficient access to resources".

Based on the definition, the programme key criteria for identification of vulnerable people includes:

- i. Orphan: Household header aged below 18-year-old
- ii. Poor households: TASAF
- iii. Worker in unregulated dangerous industry
- iv. People with disability and HIV
- v. Women
- vi. Children

⁵ CCM manifesto:

<http://www.dodoma.go.tz/storage/app/uploads/public/5a4/3a5/cb6/5a43a5cb6000c807958630.pdf>

1.6.5 Define investment profiles for plantation establishment

Due to changes of plan and in reference to the revised AWP, this intervention suggested to be implemented in the next AWP period (2021/2022).

2.3 Result 2 SMEs establish and manage value-adding processing enterprises

2.3.1 Output 2.1. Capacity of SMEs and their employees strengthened

2020/2021 AWP activity		AWP target	2 nd Quarter progress	Achievement status
Code	Activity			
2.1.1	FWITC development and training provision This also includes success in bioenergy related aspects that were not described in detailed under the aspect of FWITC development in the 2020/2021 AWP.	i) FWITC's Master Training Plan of May 2018 revised and updated with a strategy developed for FWITC training provision to meet industry needs	No progress made	Not initiated
		ii) Forestry and wood industry workers' skills and competence qualification criteria developed	No progress made	Not initiated
		iii) Qualification criteria for SMEs to qualify for PFP 2 subsidised training developed and taken into use to offer skills training courses	No progress made	Not initiated
		iv) FWITC sawmill facilities developed for efficient material handling to provide demonstrations for SME sawmillers	Follow up continued on the ongoing procurement of the mobile training unit equipment.	On progress
		v) Fully equipped carpentry workshop established to FWITC	The FWITC carpentry workshop is operational	On progress The equipment to be procured upon need
		vi) 100 SME owners, managers and supervisors trained in sawmill management, production records keeping and appreciation of improved recovery and profitability	No progress made	Not initiated
		vii) 3 workshops organized in appreciation of timber grading, raw material and sawn timber quality for higher profitability	Discussed during Mafinga Forest Industry cluster inception workshop	Initiated
		viii) 40 saw doctors trained in maintenance of narrow band saw blades	No progress made	Not initiated
		2.1.2	Facilitate implementation of FWITC business plan	FWITC's business operations running as recommend in the Business Plan presented in June 2018
2.1.3	Demonstration of appropriate forestry and wood processing technologies	i) 10 demonstrations on use of chain saws and brush cutters organized in every PFP 2 selected village	No demonstrations on the use of chain saws and brush cutters organised	Not initiated

2020/2021 AWP activity		AWP target	2 nd Quarter progress	Achievement status
Code	Activity			
		ii) 10 demonstrations on forest harvesting, skidding and wood transport organized in every PFP 2 selected village	No demonstrations on forest harvesting, skidding and wood transport organised	Not initiated
		iii) 10 demonstrations on small scale band saw and ding dong operations organized in every PFP 2 selected village	No demonstrations organised on small scale band saw and ding dong operations	Not initiated
2.1.4	Develop curricula for forest products for level 1-2-3			Suggested to be dropped out from PFP 2 intervention
2.1.5	Encourage participation of women, youth, and vulnerable groups	i) Women powered workshops organized in each PFP 2 forest industry cluster to start business plan development, establishment of business start-ups and establishment of women managed and employed business	No workshops organised	Not initiated
		ii) Awareness raising campaigns for women's participation in forestry and wood processing operations organized in Makete	As a result of sensitisation efforts by the programme to its stakeholders through various meetings and workshops 45 students from Lungemba community development college visited FWITC and Mafinga FIC to familiarise with forest sector development.	Initiated
		iii) Leaflet and guideline on vulnerable people employment published and distributed in 3 PFP 2 forest industry clusters	No progress made	Not initiated
2.1.6	Awareness raising of SMEs in company responsibilities	i) A leaflet/guideline prepared for HRBA aspects, EIA issues and company responsibilities	No leaflet/guideline prepared although the aspects discussed in programme organised events and workshops.	Initiated
		ii) 1000 guidelines distributed to SME owners, managers, and representatives	No progress made	Not initiated

2.1.1 FWITC development and training provision

To ensure sustainability of FWITC development, the programme assisted FWITC to prepare a proposal to secure fund of about Euro 437,037 from the European Union Transition (EUT) to promote development in bioenergy technology Table 2.6.

After submission and review of the proposal, the total value of the proposal increased to Euro 538,745 as opposed to the original value of about Euro 400,000. The main reasons for these changes before and after review are unknown to the programme.

Table 2.6 Fund breakdown for the proposal submitted to EUT and stakeholders included

Organisation		Budget (Euro)	Remarks
1	FWITC	437,037	Equipment as needed for RE/WEF nexus demonstration site. Earth mound kiln, Half orange/Brick) kiln, Oil drum kiln, Retort metal kiln, Pyrolizer for demo and training, Small wood pellet plant, Tractor and trailer, Chainsaw, Hand tools and equipment, Engineering workshop services. Publishing, auditing fees
2	MKAA ENDELEVU	10,740	Travel as needed for project meetings, coordination, and demonstration activities
3	SUA	16,600	Travel as needed for project meetings, coordination, and demonstration activities. Minor equipment as needed. Publishing, auditing fees
4	TAFORI	54,184	Travel as needed for project meetings, coordination, and demonstration activities. Equipment as needed for RE/WEF nexus demonstration site. Laptop computer, printer, digital camera, related software licences, four retort metal kiln, improved version, transport, assembly, two wood moisture meters, 4 chainsaws, kiln demo & training, other tools. Publishing, auditing fees
5	SCABPU	20,184	Travel as needed for project meetings, coordination, and demonstration activities. Publishing, auditing fees
Grand total		538,745	

By the reporting period, the items for the mobile training unit were procured and the transportation logistic was on progress. The procured items for the mobile training unit are expected to arrive in Tanzania on 28 February 2021. Generally, it is expected that clearance procedures might be completed by the end of March 2021 and the equipment being ready for use.

No formal trainings organised or implemented by FWITC during the reporting period. The programme is facilitating the ongoing FWITC accreditation and registration where after being completed, trainings are expected to be organised.

2.1.2 Facilitate implementation of FWITC business plan

The programme continued to support FWITC development aligning with the implementation of FWITC business plan. By the reporting period, the memorandum of understanding (MoU) between PFP 2 and FWITC was not drafted. This has been lagging behind due to the unresolved security of land tenure.

To ensure sustainability of FWITC as per business plan presented in June 2018, FWITC engaged in other income generating activities related to nursery, Joinery and carpentry, timber drying and saw doctoring and others (Table 2.7).

Table 2.7 Summary of the income generated by FWITC⁶

Item		Total sell		Profit estimates	
		TZS	Euro*	TZS	Euro*
Trainings					
No trainings organised by FWITC.					
Nursery					
<i>Eucalyptus urograndis</i>	52,000 seedlings	13,000,000	5,098	6,600,000	2,588
Sub total		13,000,000	5,098	6,600,000	2,588
Joinery and Carpentry					
5X6 Bed	2	640,000		150,000	
bed 6x6	1	350,000		85,000	
Cabinet	3	1,011,000		337,000	

⁶ This information is based on orders hence actual deposits is described under finance section.

Item		Total sell		Profit estimates	
		TZS	Euro*	TZS	Euro*
chairs	8	536,000		180,000	
child bed	1	200,000		67,000	
child chair	1	15,000		5,000	
child table	1	35,000		12,000	
coffee table	2	200,000		66,000	
dining table	2	1,121,000		342,000	
drying load	1	230,000		-	
drying loads	2	460,000		-	
flash doors	12	600,000		276,000	
medium dining table	2	640,000		150,000	
office chair	1	45,000		15,000	
seat chairs	2	160,000		54,000	
shelf	1	150,000		50,000	
shoe raker	1	50,000		20,000	
show case	1	350,000		116,000	
show case for TV	1	360,000		120,000	
studying table	1	70,000		24,000	
table	1	150,000		50,000	
toolbox	1	50,000		27,000	
Sub total		7,423,000	2,910.98	2,146,000	841.57
Timber drying and saw doctoring					
Loads	3 times	690,000	270.5	-	-
Sharpening circular saw	1	20,000	7.8	-	-
Sub total		710,000	278.3	-	-
Conference room hiring					
Full day hiring	7	1,400,000	549.02	-	-
Half day hiring	1	100,000	39.21	-	-
Sub total		1,500,000	588.23	-	-
GRAND TOTAL		22,633,000	8,875.51	8,746,000	3,429.57

*conversion rate TZS 1 = Euro 2,550

2.1.3 Demonstration of appropriate forestry and wood processing technologies

The programme will conduct the training need assessment to SMEs in Makete districts to start implement the activity during the third quarter.

2.1.4 Develop curricula for forest products for level 1-2-3

The programme through PFP 1 managed to facilitate development of forestry and wood industries attendant curricula which are to be accredited in the third quarter. Much focus is need to ensure these accredited curricula become operational hence in consideration to the timeframe needed for a curricula to be developed and accredited this activity is suggested to be dropped out from PFP 2 intervention.

2.1.5 Encourage participation of women, youth, and vulnerable groups

The programme continued to raise awareness to encourage women, youth, and vulnerable groups participation. As among of the key agenda of the programme organised workshops and meetings, the programme managed to raise sensitization awareness to the stakeholders to encourage participation of women, youth and vulnerable groups in forestry sector.

On 30 October 2020, a total of 45 students aged below 30 years from Lungemba community development college in a trip facilitated by RLaBs visited FWITC and Mafinga forest industry cluster development as part of the initiative to encourage participation of women, youth and vulnerable groups. This is the result of continuous sensitisation efforts by the programme in raising awareness to forest stakeholders on the importance of inclusive forestry sector.

The programme is working closely with community development officers in all 3 forest industry clusters, to understand needs of women, youth and vulnerable groups and best way to engage them in programme activities.

2.1.6 Awareness raising of SMEs in company responsibilities

The leaflet/guideline for HRBA aspect, environment impact assessment (EIA) issues and company responsibilities were not prepared.

During the Mafinga forest industry cluster inception workshop that was conducted on 16 to 17 December 2020, participants received detailed presentations related to human rights and company responsibilities, environment impact assessment (EIA) and management as well as on work site security management in SMEs.

2.3.2 Output 2.2. Increased access of SMEs to financing

2020/2021 AWP activity		AWP target	2 nd Quarter progress	Achievement status
Code	Activity			
2.2.1	Support SMEs in preparing business plans	i) PFP 2 staff trained in business plan preparation	Staff trained during the first quarter.	Achieved
		ii) 2 business planning training events/workshops organized in each of the three PFP 2 forest industry clusters	The programme drafted a tender on business planning training that remains to be approved by 4 th PSC.	Initiated
		iii) 90 SME owners and managers trained and familiarized for business plan design, procedures and preparation	No progress made	Not initiated
		iv) 30 business plans prepared with participating SMEs	No progress made	Not initiated
		v) 10 SMEs received loans from financial institutions for various business developments	No progress made	Not initiated
2.2.2	Linking SMEs and financial institutions	i) Facilitation workshop organized in each of the three PFP 2 forest industry clusters	The programme organised a Mafinga Forest Industry Cluster inception workshop	Initiated
		ii) A platform established for information sharing and technical assistance support between the financial institutions and SMEs	No progress made	Not initiated
		iii) Special regional exchange forum for information sharing and facilitation between various actor in financing, machine sales and supplies organized	No progress made	Not initiated
2.2.3	Supporting SMEs in sourcing global investment funds	No target for AWP 2020/21		

2.2.1 Support SMEs in preparing business plans

The programme through woodlot and SMEs assessment, managed to identify a total of 174 SMEs in Makete districts. The programme has not yet started facilitating development of SMEs business plans, although a service provision tender to support SMEs in developing business plans drafted for approval by the PSC. By the reporting period, the service provision contract was not yet approved to be advertised for tendering.

No series of training events or workshops organised by the programme for SME owners and managers in any of the three forest industry clusters on business planning.

On innovative business ideas and models, the programme is supporting implementation of a furniture design project known as afri-furniture by leapfrog company. During the reporting period a study to assess Tanzanian furniture market insights and opportunities was on going and expected to be finalised in the next quarter. The afri-furniture project managed to execute its first steering committee meeting on 15 December 2020 including 12 participants in the furniture design value chain (Table 2.8).

Table 2.8 Participants of the first steering committee meeting of the afri-furniture project

Name	Institution/company
1 Helena Sandman (Chair)	Leapfrog company
2 Thomas Holm	Leapfrog company
3 Thomas Selännemi	Indufor Oy and PFP 2
4 Michael Hawkes	PFP 2
5 Joyce Msigwa	PFP 2
6 Leonard Chisokole	PFP 2
7 Suri Amar	Tanganyika Plywood ltd
8 Jussi Hinkannen	Leapfrog company
9 Sara Gottschalk	Leapfrog company
10 Naomi Rouse	RLabs
11 Eliya Mtupile	PFP 2
12 Ben Ray	Neema Craft

2.2.2 Linking SMEs and financial institutions

The programme through the organised Mafinga forest industry cluster inception workshop facilitated linkages and co-operation opportunities for SMEs to establish initial links with financial institutions.

No formal discussion platforms and workshops organised by the programme for introducing and linking SMEs with potential financial institutions for exchange of needs and requirements in loan application preparation and opportunities.

No progress made by the programme during the reporting period to support linking machinery producers, second-hand machine suppliers, financial service providers and SMEs together.

2.2.3 Supporting SMEs in sourcing global investment funds

No target for the 2020/2021 annual work plan period.

2.3.3 Output 2.3. Improved recovery of raw materials and quality of products along the value chain

2020/2021 AWP activity		AWP target	2 nd Quarter progress	Achievement status
Code	Activity			
2.3.1	Development and deployment of log and sawn timber grading	i) Log and sawn timber sorting and grading rules accredited and published	The log and sawn timber sorting and grading gazetted by GN No. 882 and published on 9 October 2020.	Achieved
		ii) 3 sensitization and appreciation workshops organized to sensitize forestry sector to log and sawn timber grading rules	Mafinga forest industry cluster inception workshop organized by the programme	Initiated
		iii) 3 training courses on log and sawn timber grading and appreciation of harvesting operations organized	No progress made	Not initiated

2020/2021 AWP activity		AWP target	2 nd Quarter progress	Achievement status
Code	Activity			
2.3.2	Support wood industry sector for sustainable raw material procurement	Three participatory and all-inclusive workshops organized to integrate private and public tree growers, TTGAU and TGAs with SME wood processors	2 workshops organised by the programme: - The Mafinga FIC inception workshop - A workshop on possibility of tree growers to supply 2,500 tonnes of charcoal annually to MKAA ENDELEVU	Initiated
2.3.3	Development of appropriate forest and wood processing technologies	i) PFP 2 staff trained for use of appropriate forest harvesting and mobile sawmill technologies to be used in introduction and demonstration for tree growers and SME sawmillers	The training mobile unit equipment procured. Transportation and clearance logistics were on progress.	Initiated
		ii) Second-hand forest and wood processing machine importation project established with private companies from Finland and Tanzania	No progress made 1 workshop organised by the programme during the inception phase period.	Initiated
		iii) 240" containers of second-hand forest and wood processing machines imported to Tanzania	No progress made	Not initiated
		iv) Delivery, service, spare part and maintenance centre established to Southern Highlands for second-hand machine deliveries and after sales services	No progress made	Not initiated
		v) Technical staff for second-hand machine delivery, service and maintenance centre trained	No progress made	Not initiated
		vi) Improved ding dong model with improved production operations established for training and demonstrations	Discussions initiated during the Mafinga Forestry Industry Cluster inception workshop and other stakeholders' meetings.	Initiated
2.3.4	Product development and improved use of wood waste	i) SME study tours organised to RSA and Finland to familiarize forest and wood industry people for options of new forest and wood products and processing technologies	No progress made	Not initiated
		ii) Afri-furniture Design Project started, and 1st workshops organized to engage and commit stakeholders and partners to the project	The project is on progress. Managed to execute its first steering meeting on 15 December 2020.	Initiated

2020/2021 AWP activity		AWP target	2 nd Quarter progress	Achievement status
Code	Activity			
		iii) Two local furniture and wood products designers employed for a short-term contract to design new wood products and to assist in setting up a women managed wood processing units or carpentry workshops	No progress made	Not initiated
		iv) Links with external roof truss and log cabin house manufactures established.	No progress made	Not initiated
		v) Links and co-operation with external roof truss, prefabricated and log cabin house manufactures established	No progress made	Not initiated

2.3.1 Development and deployment of log and sawn timber grading

On October 2018 PFP in collaboration with Tanzania Bureau of Standards (TBS) and Stellenbosch University, submitted to the TBS a revised standard for pine structural sawn timber grading after research led by Professor Mwamakimbulla and Mr. James Sige.

By the end of first quarter period, TBS were advising that “the standards are at a very advanced stage (out of the hands of the TBS) for gazetting to the National Gazette before publication.

"TZS 387:2020 Timber-strength grading of coniferous sawn timber (cypress and pine) for structural use" and "TZS 256-1:2020 Timber-dimensions for coniferous sawn timber (cypress and pine)" were gazetted by GN No. 882 and published on 9 October 2020.

Currently TFS is on top in enforcing the structural sawn timber grading rules. The discussion on these published grading roles discussed during the Mafinga forest industry cluster for familiarisation and sensitization to introduce the rules.

2.3.2 Support wood industry sector for sustainable raw material procurement

During the reporting period, programme organised Mafinga forest industry cluster inception workshop, discussions risen on possibility of having long term forest concessions and sustainable logging permits for SMEs for substantiable raw material procurement and supply.

Also, the programme managed to organise 1 participatory and all-inclusive workshop to integrate private and public tree growers, TTGAU and TGAs with SMEs wood processors. The workshop was to discuss on the possibility of smallholder tree growers to supply 2,500 tons of charcoal to MKAA ENDELEVU annually. Stakeholders recommended PFP 2 to facilitate feasibility study to assess viability of the business. The programme managed to prepare and draft ToRs for this service provision although by the reporting period it was on progress to be approved.

2.3.3 Development of appropriate forest and wood processing technologies

The items for the mobile training unit procured and expected to be in use by the end of March 2021. Then PFP 2 staffs including wood industries extension officers/workers and tutor will be trained on the use of these mobile training unit items for appropriate forest harvesting and mobile sawmill technologies to be used in introduction and demonstration for tree growers and SME sawmillers.

Apart from one workshop organised by the programme during the inception period, no progress made during this quarter on second-hand forest and wood processing machine importation project established with private companies from Finland and Tanzania. This mainly has been limited by the risk posed by the impact of COVID-19.

It was recommended and discussed during the Mafinga forest industry cluster inception workshop for the programme to facilitate FWITC to procure and establish improved ding dong model with improved production operations for training and demonstrations to tree growers and SMEs sawmillers.

2.3.4 Product development and improved use of wood waste

PFP 2 in collaboration with leapfrog company managed to identify relatively advanced and innovative SMEs and big companies to co-operate in implementation of the afri-furniture design project as steering committee member.

As described earlier, the afri-furniture design project managed to conduct its first steering committee meeting on 15 December 2020. The proposal of the project was communicated through FORVAC at its early stages and currently facilitated by PFP 2.

Selection of members for the steering committee of the afri-furniture design project also considered options and opportunities for women, youth, and vulnerable people to be engaged in innovative furniture making. As a start-up RLaBs and Neema Craft engaged as a leading institution in encouraging youth and vulnerable groups participation in furniture making business, respectively.

2.3.4 Output 2.4. Improved communication and integration of forestry and wood industry associations, enterprises, and clients

2020/2021 AWP activity		AWP target	2 nd Quarter progress	Achievement status
Code	Activity			
2.4.1	Awareness raising in utilization of forest and wood products	i) Campaign designed and organized to promote wood products and wood utilization in Tanzanian households and showcases at the marketplaces	The programme organised 3 events incorporating discussion to this aspect.	Initiated
		ii) National guideline prepared for SME business development in forestry and wood industry	No progress made	Not initiated
		iii) Initiation of industrial incubation and market information centre establishment to Makete, Njombe and Mafinga towns	No progress made	Not initiated
		iv) Show rooms and showcases for new wood products and furniture to some major towns in Tanzania designed and established	No progress made	Not initiated
2.4.2	Establish a strategy for forest information systems	Strategy for forest information system development prepared	No progress made	Not initiated
2.4.3	Accomplish and synchronize FMIS and MaIS	FMIS and MaIS accomplished and synchronized with other relevant systems in Tanzania	No progress made	Not initiated
2.4.4	Dissemination of FMIS and MaIS	Forestry value chain trade fair and a workshop hosted to disseminate FMIS and MaIS	No progress made	Not initiated

2020/2021 AWP activity		AWP target	2 nd Quarter progress	Achievement status
Code	Activity			
2.4.5	PFP's Industrial Node development	i) Makete Industrial node supported and developed to the level that its' individual groups operate successfully, and their business is profitable	The charcoal metal kiln piloted in LUMAKI and Ilindiwe. Although production limited by the ongoing rainfall.	Initiated
		ii) PFP 2 staff trained and facilitated for forest industry cluster development	PFP 2 staff trained and facilitated for forest industry cluster development	Achieved
		iii) A manual with guidelines for forest industry cluster development prepared for PFP 2 internal use	No progress made	Not initiated

2.4.1 Awareness raising in utilization of forest and wood products

No formal campaign designed to promote utilisation of forest and wood products. Alternatively, to diversify and promote the use of wood waste for charcoal making production, the programme managed to introduce 4 charcoal metal kilns in Mago, Ilindiwe, Bulonwa and Ludihani villages in Makete district to demonstrate and pilot charcoal production in Makete district. Forest waste observed in smallholders' plantations around Makete district could be sustainably value added to useful wood products to generate more income.

Awareness raising in utilisation of forest and wood products has been a key agenda to the 3-workshops organised by the programme: the CMT workshop, the Mafinga forest industry cluster workshop and the linkage between SME and tree growers' workshop.

No progress made on the idea to develop a fixed and mobile show rooms where forest and wood products and wood utilisation could be shown to public.

Discussions initiated with all key stakeholders including regional and district government on the importance of developing the SME business development and SME association establishment guideline for SME development in forest markets, and forest and wood industry operations in Tanzania.

2.4.2 Establish a strategy for forest information systems

The programme suggested to drop out the activity in reference to the revised AWP due to low relevance.

2.4.3 Accomplish and synchronize FMIS and MaIS

Due to changes of plans to accomplish baseline studies in Mafinga and Njombe forest industry clusters, some progress might be initiated on FMIS and MaIS although the programme suggested to be implemented in the next AWP (2021/2022).

2.4.4 Dissemination of FMIS and MaIS

Due to changes of plans to accomplish baseline studies in Mafinga and Njombe forest industry clusters, some progress might be initiated on FMIS and MaIS although the programme suggested to be implemented in the next AWP (2021/2022).

2.4.5 PFP's Industrial Node development

Discussions initiated with district government in Makete on sustainability of the established UTIIB band sawmill business. Due to general election related activities, it was postponed being followed up in the next quarter.

No progress made by the programme during the reporting period on support to establish timber yards in district identified villages during the inception phase. Since this required higher

contribution from the district side and due to the ongoing general election campaign, it did not progress.

The programme managed to pilot the introduced charcoal metal kiln production in LUMAKI (Lupalilo, Mago and Kising'a villages) in which the kiln is stationed at Mago villages, and Iindiwe village. Although production is limited with the ongoing rainfall. Discussion initiated with SIDO to check if there is possibility of modifying the kilns to be able to produce even during rain season.

The programme during the first quarter managed to achieve training all PFP 2 staffs on forest industry cluster development. This is to ensure that the concept is well known for easy communication and awareness raising to the stakeholders and beneficiary of the programme.

2.3.5 Output 2.5. Policy and partnership support

2020/2021 AWP activity		AWP target	2 nd Quarter progress	Achievement status
Code	Activity			
2.5.1	Facilitation of dialogue and liaison platform	i) Forest and wood industry development related information shared to regional and district authorities	Information shared during the Mafinga Forest Industry Cluster inception workshop The programme participated in the TNBC national level meeting	Initiated
		ii) A study to analyse and recommend district level business environment development in forest and wood industry matters organized	To be discussed in the participatory district planning workshop in the next quarter.	Initiated
		iii) SHIVIMITA facilitated with resources for improved dialogue and liaison	No progress made	Not initiated
2.5.2	Association development in wood industry sector	i) Study tours organized to Finland and South Africa for information sharing and learning from forestry association work and development	No progress made	Not initiated
		ii) A national workshop and discussion forum organized on forestry association development	No progress made	Not initiated
		iii) A roadmap prepared for Tanzanian forestry association development including SHIVIMITA and its subordinate associations	No progress made	Not initiated
2.5.3	Facilitation and enforcement of HRBAs in PFP 2 implementation	i) PFP 2 staff trained in HBRA issues to ensure they understand and include facilitation of these to their day-to-day work		Achieved
		ii) Guideline and updates provided in HRBA, labour legislations and all-inclusive approaches to PFP 2 staff to follow in their day-to-day work	No progress made Waiting for HRBA assessment report and recommendation approval	Initiated Currently communicated as per MFA guideline and draft HRBA assessment report to be approved by PSC
		iii) All PFP 2 training provisions and extension services include OSHA	OSHA included in all PFP 2 training provision and extension services	Achieved

2.5.1 Facilitation of dialogue and liaison platform

To ensure conducive public private dialogue exists on a regional and district level, the programme managed to organise 2 forest industry cluster workshop and by the reporting period managed to implement only the Mafinga forest industry cluster workshop. The second combined Njombe and Makete forest industry clusters inception workshop is planned to take place during the third quarter.

The programme participated in the Tanzania National Business Council (TNBC) meeting that was conducted on 02 and 03 December 2020. The aim of the meeting was to evaluate performance of the TNBC in two years' time and to discuss on the priorities for recommendation on forest sector for the period of 2020 to 2025.

2.5.2 Association development in wood industry sector

The activity will be initiated for implementation during the third quarter. During the reporting period the programme was finalising baseline study in Makete hence support for association development in wood industry for Makete will be initiated.

2.5.3 Facilitation and enforcement of HRBAs in PFP 2 implementation

The programme achieves to train its staff on HRBA to explore them to real environment and to ensure that all staff members understand the importance of these issues in their day to day work.

The programme continued to ensure and promote the rights and obligations of workers and whenever PFP 2 staff will be involved in programme interventions and encourage and co-operate with TFS to enforce existing forestry work and employment regulation.

The programme continues to monitor and follow workers' skills training provided to include OSHA issues as part of the training programme.

2.4 Progress of the inception phase outputs carried to implementation period

3.2.1 Programme Document revised and approved

2020/2021 AWP task	AWP target	2nd Quarter progress	Achievement status
Baseline survey	Baseline to be completed in Makete	Baseline studies in Makete completed	completed
RBMF	To be finalised	RBMF finalised	finalised
PD revision	To be revised	To be finalised upon approval of the updated RBMF	On progress

The programme completed the baseline survey in Makete district. During the reporting period data were analysed and reports drafted for approval by the third PSC meeting. The woodlot and SME report were approved, and the comments given were incorporated to the final report. On the other hand, the HRBA report was set to be approved upon incorporation of the comments by the PSC hence not approved by the end of reporting period.

It was recommended from the third PSC, the programme to plan and finalise baseline survey in the remaining Mafinga and Njombe forest industry clusters.

The findings and baseline values incorporated to the updated RBMF appended in Annex 1. The programme proposed some changes to the RBMF as presented in Annex 2. It should be noted that, the appended RBMF version incorporated with the proposed changes.

Overall, the programme is proposing to remove Output 2.5 "Policy and partnership support" due to lack of substance, best manifested in the programme document description. The main focus of the component should be on how to ensure raw material supply to SMEs during the transition period before most smallholder plantations reach maturity in a large scale. Practical interpretation for the description remains incomprehensible.

Hence any substantiated details established under Output 2.5 are, in fact, more relevant as merged into other outputs. This aspect is increasingly evident after revision of Output 2.4 definition from "Improved communication between SMEs, wood producers and customers" into

"Improved communication and integration of forestry and wood industry associations, enterprises and clients", which does better describe its contents and also makes the overlap between the two outputs clear.

A lot of the substantiated details under Output 2.5 actually concern communication. This is already covered by Output 1.5 and Output 2.4.

Restricting policy issues under Output 2.5 only, which is as a Result area 2 component and hence addressing forest industries, indicates that policy issues concerning other parts of the value chain remain unaddressed. Advancing policy issues in general suits the programme better as a cross-cutting theme that may influence multiple or even all outputs at once.

The latest RBMF version had the number of indicators under Output 2.5 already reduced into merely three, after removal and modification of various problematic indicators. Out of the remaining three indicators one is still more suitable as a workplan target and two others suit thematically better under other outputs.

The programme also introduced 3 new indicators related to seed orchards and bioenergy development interventions. This was because, there were no indicators for these aspects despite the fact that, these were among of the key achievements of the PFP 1 interventions that would still require support for sustainability.

Due to change of plan, recommended from the third PSC to expand programme baseline to Mafinga and Njombe forest industry cluster, the programme document will be finalised upon the approval of the RBMF during the fourth PSC.

3.2.2 Familiarization of programme management team and stakeholders

The programme managed to organise and implement the Mafinga forest industry cluster inception workshop on 16th and 17th December 2020. The honourable guest was RC-Iringa Hon. Ally Hapi, who unfortunately could not manage to attend and was represented by DC-Mufindi Hon. Jamhuri David William represented.

The programme planned to implement the Njombe and Makete forestry industry cluster combined inception workshop to be implemented in the next quarter.

In the reporting period, the programme participated and/or conducted 68 events meetings. Out of these 10 workshop events (4 organised by the programme and 6 invited/organised by other stakeholders) and 58 meetings conducted as observed in Table 2.9.

Table 2.9 Summary of the major meetings and workshops

Title of the meeting		Description
1	National scenario workshop (27 November 2020) (Organised by SUA)	Organised by SUA on solutions for a sustainable wood supply and narrowing the wood supply gap in East Africa.
2	Tanzania Forest Association scientific assembly (from 10 to 11 December 2020) (Organised by Tanzania Forest Association)	A platform for scientist to present various development interventions made in the forest sector.
3	3 rd PSC meeting (3 rd December 2020) (Organised by PFP 2)	The meeting was held in Makete district and PSC members did a 5 days familiarisation field visit from 30 th November to 03 rd December 2020.
4	Mafinga Forest Industry Cluster inception workshop (from 16 th to 17 th December 2020) (Organised by PFP 2)	A participatory regional and district level forestry workshop to introduce PFP 2 and discuss on opportunities to collaborate with key stakeholders in Mafinga forest industry cluster
5	Development of TGA establishment guideline validation workshop (10 December 2020) (Organised by PFP 2)	This was a participatory validation workshop with district officials in all three clusters including TTGAU to finalise the draft TGA establishment guideline
6	A workshop on smallholders' tree growers potential supply of charcoal to Mkaa Endelevu. (from 5 to 6 December 2020) (Organised by PFP 2)	This was a result of continuous effort by the programme in linking SMEs with tree growers in the forest sector

Title of the meeting		Description
7	National forest advisory committee (NAFAC) meeting (from 14 th to 15 th December 2020) (Organised by NAFAC)	The programme led participants of the meeting with field visit and received an opportunity to present overview of the programme.
8	Meeting on proposal to EUT (November and December 2020) (Organised by EUT)	Discussion on proposal to secure fund for FWITC and other stakeholders on bioenergy technologies.
9	Council management team (CMT) feedback workshop (4 December 2020) (Organised by PFP 2)	This was a validation meeting and participatory planning meeting on way forward for PFP 2 interventions in Makete district
10	Mapping of forest plantation and woodlots by applying remote sensing and GIS technologies (16 October 2020) (Organised by TAFORI)	The workshop was to contribute on the continuous effort to improve information sharing among stakeholders in forest sector.
11	6 district level meetings and 20 village level meetings including Mafinga TC, Mufindi DC and Kilolo DC (Organised by PFP 2)	This meeting aimed on introducing PFP 2 and agreeing on villages for programme interventions Mafinga FIC
12	5 district level meetings and 26 village level meetings in Ludewa DC, Madaba DC, Njombe TC, Njombe DC and Makambako TC (October to December 2020) (Organised by PFP 2)	This meeting aimed on introducing PFP 2 and agreeing on villages for programme interventions in Njombe FIC
13	TNBC meeting (10 December 2020) (Facilitated by FDT)	Discuss a forest sector plan for 2020 to 2025
14	Seed orchards stakeholders meeting (24 and 25 November 2020) (Organised by PFP 2)	To discuss on seed orchards development

3.2.3 Development of MoUs with districts and partners

A participatory district planning workshop is planned to be conducted in the third quarter to discuss and prepare the draft district MoUs for all PFP 2 town council and district council.

NLUPC MoU drafted and to be approved in the 4th PSC meeting.

The programme communicated to MNRT requesting a ministry level lawyer to assist on drafting of the district and seed orchards stakeholders MoUs. By the reporting period implementation was set to be in the next quarter.

3.2.4 Establishment of annual service provision contracts

The proposed service provision contract between PFP 2 and TTGAU was negotiated and drafted and submitted to quality assurance team (QAT). By the reporting period it was not yet approved and signed.

Communication service provision terms of reference were drafted and submitted to quality assurance team. It was later discussed by the competent authority on 23 December 2020, and they recommended to go for normal procurement procedures.

3.2.5 Development of PFP 2 communication strategy

The programme prepared a communication service provision contract for approval which include facilitation to develop programme communication strategy.

3.2.6 Development of monitoring and evaluation plan for PFP 2

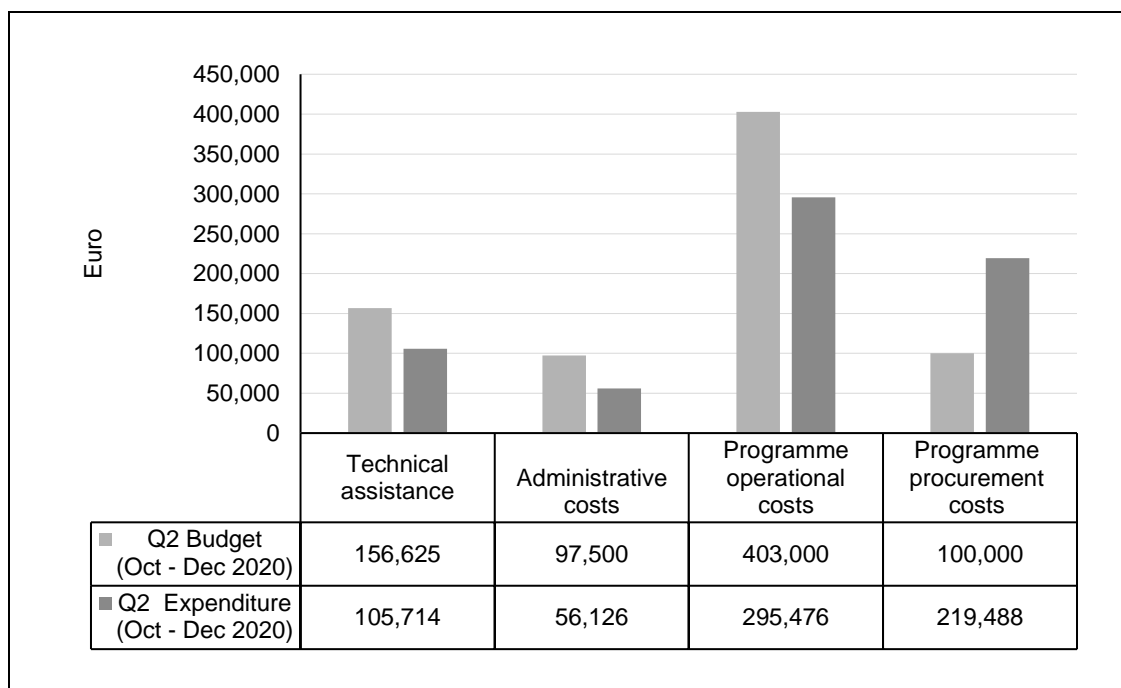
The monitoring and evaluation plan drafted and to be finalized after revised the RBMF and PD approved.

3. RESOURCES AND BUDGET

3.1 Finance

The overall budget of the programme for the reporting period was Euro 787,125 and the actual expenditure was Euro 676,805 equivalent to 86% expenditure. This exclude the OSP expenditure which were not yet incorporated by the reporting period (Sometimes it takes one month time lag). Figure 3.1 compare the second quarter budget against the actual expenditures.

Figure 3.1 Brief summary of the second quarter expenditure versus the budget



3.2 Reasons for over and under expenditure

In reference to Table 3.1, for the period from 1 July to 31 December 2020 the programme spent 37.3% of the budget set for the 2020/2021 AWP period. The total budget for the period from 1st July to 30th June 2021 is Euro 3,185,598. Table 3.2 describe expenditure by the programme for the period of 1 October to 31 December 2020.

The reason for overall under spending being postponing of the Njombe and Makete forest cluster regional inception workshop that was to be conducted in December 2020 as well as organising cross cutting regional cluster-based inception workshop instead of organising several specific thematic workshops as initially planned in the AWP. This will help the programme in the remaining third and fourth quarter to focus on providing extension services and planning for finalisation of the baseline studies in the remaining Mafinga and Njombe forest industry cluster. The workshops conducted were charged against output 1.6 hence over expenditure. Procurement cost in the first quarter were realised in second quarter.

3.3 Technical assistance

By the reporting period, the total number of days from July to December 2020 consumed for technical assistance works were 677 days. Out of these days a total of 329 days consumed during the second quarter period. Currently the total days remained for technical assistance are 573 days equivalent to 46%. The total number of days allocated for technical assistance for the 2020/2021 annual work plan period is 1,250 days. Theoretically, 54% of the total man days allocated for technical assistance consumed for various programme interventions.

3.4 Procurement update

By 31 December 2020, the status of procurement in relation to that planned in the AWP was as shown in Annex 3.

Table 3.1 The programme expenditure for six months from 1 July to 31 December 2020

Budget item	AWP budget (2020-2021)	Expenditure (Jul - Dec)	Expenditure (%)	Annual Balance
GRAND TOTAL PFP 2 Budget 07/2020-6/2021	3,185,598	1,188,454	37.3%	2,197,144
TECHNICAL ASSISTANCE	626,500	226,441	36.1%	400,059
Technical Assistance Fees, International	301,500	96,000	31.8%	205,500
Technical Assistance Fees, National	325,000	130,441	40.1%	194,559
ADMINISTRATIVE COSTS	390,000	127,647	32.7%	262,353
PROGRAMME OPERATIONAL COSTS (Result area 1 + 2)	1,253,000	508,827	40.6%	744,173
Result area 1: Tree growers establish and manage plantations	763,000	395,713	51.9%	367,287
Output 1.1 Private forestry organizations are strengthened	130,000	73,101	56.2%	56,899
Output 1.2 Stakeholders capacity in tree growing has been strengthened	270,000	154,664	57.3%	115,336
Output 1.3 Tree growers' access to forest finance increased and diversified	34,000	3,052	9.0%	30,948
Output 1.4 People have increased capacity and resources to manage fires	30,000	0	0%	30,000
Output 1.5 Strengthened communication	59,000	24,140	40.9%	34,860
Output 1.6 Institutionalization of private forestry	240,000	140,756	58.6%	99,244
Result 2: SMEs establish and manage value-adding processing enterprises	490,000	113,114	23.1%	376,886
Output 2.1 Capacity of SMEs and their employees strengthened	150,000	74,981	50.0%	75,019
Output 2.2 Increased access of SMEs to financing	40,000	2,078	5.2%	37,922
Output 2.3 Improved recovery of raw materials and quality of products along the value chain	200,000	4,487	2.2%	195,513
Output 2.4 Improved communication and integration of forestry and wood industry associations	40,000	2,530	6.3%	37,470
Output 2.5 Policy and partnership support	60,000	29,038	48.4%	30,962
PROGRAMME PROCUREMENT COSTS (A + B + operational costs vehicles and office)	816,098	325,538	39.8%	490,560
OUT GROWER SCHEME	100,000	0	0%	100,000
EXTERNAL AUDIT			N/A	
JOINT M&E MISSIONS			N/A	
CONTINGENCY			N/A	

Table 3.2 The programme expenditure versus the budget for the period of 1 October to 31 December 2020

Budget item	AWP budget (2020-2021)	Q2 Budget	Q2 Expenditure	Expenditure (%)	Balance
GRAND TOTAL PFP 2 Budget 07/2020-6/2021	3,185,598	787,125	676,805	86.0%	2,508,793
TECHNICAL ASSISTANCE	626,500	156,625	105,714	67.5%	520,786
Technical Assistance Fees, International	301,500	75,375	47,238	62.7%	254,262
Technical Assistance Fees, National	325,000	81,250	58,476	72.0%	266,524
ADMINISTRATIVE COSTS	390,000	97,500	56,126	57.6%	333,874
PROGRAMME OPERATIONAL COSTS (Result area 1 + 2)	1,253,000	403,000	295,476	73.3%	957,524
Result area 1: Tree growers establish and manage plantations	763,000	207,000	232,599	112.4%	530,401
Output 1.1 Private forestry organizations are strengthened	130,000	40,000	35,721	89.3%	94,279
Output 1.2 Stakeholders capacity in tree growing has been strengthened	270,000	75,000	82,116	109.5%	187,884
Output 1.3 Tree growers' access to forest finance increased and diversified	34,000	12,000	3,052	25.4%	30,948
Output 1.4 People have increased capacity and resources to manage fires	30,000	10,000			30,000
Output 1.5 Strengthened communication	59,000	20,000	282	1.4%	58,718
Output 1.6 Institutionalization of private forestry	240,000	50,000	111,428	222.9%	128,572
Result 2: SMEs establish and manage value-adding processing enterprises	490,000	196,000	62,878	32.1%	427,122
Output 2.1 Capacity of SMEs and their employees strengthened	150,000	60,000	40,448	67.4%	109,552
Output 2.2 Increased access of SMEs to financing	40,000	5,000			40,000
Output 2.3 Improved recovery of raw materials and quality of products along the...	200,000	90,000	1,114	1.2%	198,886
Output 2.4 Improved communication and integration of forestry and wood industry...	40,000	13,000	2,125	16.3%	37,875
Output 2.5 Policy and partnership support	60,000	28,000	19,191	68.5%	40,809
PROGRAMME PROCUREMENT COSTS (A + B + vehicles and office)	816,098	100,000	219,488	219.5%	596,610
OUT GROWER SCHEME	100,000	30,000			100,000
EXTERNAL AUDIT				N/A	
JOINT M&E MISSIONS				N/A	
CONTINGENCY				N/A	

4. ASSUMPTIONS AND RISKS

4.1 Assumptions

No changes of the assumption statements for each result chain component. The assumptions remained as presented in the RBMF of the 2020/2021 AWP report endorsed by the PSC on 14 July 2020.

4.2 Risk assessment and mitigation of the risk

4.2.1 Programme document identified risks

Analysis of the key risk related to the implementation of the programme and the proposed mitigation strategies remained as presented in the in the 2020/2021 annual work plan endorsed by the second PSC conducted on 14 July 2020.

Furthermore, significant changes and assessment to the risk identified expected to be analysed during the annual progress report for the 2020/2021 AWP period. This aligns with the instruction from the manual for bilateral programmes under section on risk management (page 21 on monitoring of risk).

4.2.2 Programme emerging risks

By the reporting period there was no progress made on the programme being VAT exempted. Through the third PSC meeting, it was confirmed through ministry of finance that the programme is supposed to be VAT exempted. Although no formal letter issued to be used as a reference. The programme was advised to proceed with procurement that are not affected by the issue of VAT while the competent authorities continue to follow up on the issue.

As recommended by the third PSC, the programme to assess the risk posed by avocado plantations to replace forest plantations. The programme through stakeholders' meetings and workshops discussed the issue with regional and district government as well as stakeholders to obtain their views prior to analysis to assess the risk.

Overall, most stakeholders do not perceive it as a risk but rather an opportunity to diversify sources of income.

Hence, the issue of avocado plantation could act as an income generating activity which, if could be implemented simultaneously with forestry might reduce the challenge of premature harvest by smallholder tree growers.

The risk assessment for the threat posed by avocado plantation in forest sector and the progress of the risk observed emerged risks during the first quarter are presented in Table 4.1. Apart from the issue of avocado, no emerging risks observed during the second quarter period.

Table 4.1 Risk matrix for the emerging risks

Risk factor	Likelihood	Impact of risk	Justification	Risk response
Threat paused due to conversion of forest plantation areas into avocado plantations	medium	Low	Apart of existence of avocado plantation, forest sector is still leading in collection of CESS and VAT in programme areas. Hence reliable source of income to tree growers and the government	The programme intensifies participatory VLUP and sensitization on the importance of diversifying sources of income
Slowdown of programme's operations at district and village level due to the national general election	Low ↓	Low ↓	National Electoral Commission (NEC) guided all election supervisors to prepare and communicate the campaign and election schedule at all levels.	The programme operations schedule communicated to district and village government to agree on implementational timeline.

Risk factor	Likelihood	Impact of risk	Justification	Risk response
Possible outbreak of COVID-19 pandemic	Medium ↑	Medium ↑	Scientifically not proven, but surprisingly COVID-19 occurrence appeared to be low. It was declared by the government that no COVID-19 in the country.	The programme intensified health and safety measures against COVID-19 and prepared a guideline in reference to the updates and guidelines provided by Ministry of Health in Tanzania and World Health Organisation (WHO).
The programme not being VAT exempted	Low	Medium	Director of Taxpayer Services and Education of Tanzania Revenue Authority clarified the programme to be VAT exempted. VAT unclarity limited procurement progress and recruitment process.	Mostly outside the influence of PFP 2. The programme will follow up on it together with the competent authorities. Mitigative measures will further be elaborated in the next quarter period.

5. PLANNED ACTIVITIES FOR NEXT QUARTER

During the third quarter the programme is planning to expand baseline studies in the remaining Mafinga and Njombe forest industry clusters. Below is the list of the planned activities to be implemented in the third quarter of 2020/2021 AWP.

- Procurement and implementation of the SMEs service provision to:
 - Capacitate PFP 2 wood industry extension staff as facilitators in participatory methods for developing SME capacity through mentoring on-the-job and through short courses. (All PFP 2 extension staff and selected district staff should be included in formalised short courses.)
 - Identify priority support needs of 20 ding dong entrepreneurs, 20 charcoal entrepreneurs and 20 joinery/carpentry businesses developed in an interactive and participatory manner.
 - Prepare manual for strengthening SMEs, and capacitating wood industry extension staff (based on identified needs) developed interactively with SMEs and PFP 2 extension staff.
 - Facilitate 60 SME improvement plans, to be developed as part of the training, these will be simple and realistic, (for example 5 actions which the SMEs believe would help improve operations).
 - 60 SME financial records, as SMEs will be encouraged to start keeping financial records to better understand their businesses, and these will be shared with PFP 2.
 - Feasibility study assessing the price at which charcoal for briquette manufacture can be produced at scale from wood waste in a range of locations and technologies, and , TTGAU marketed.
- Conduct training needs assessment for the SMEs in Makete
- Support tree growers in Makete in preparation of woodlots management plans
- Implement the regional; Njombe and Makete forest industry clusters inception workshop on 28 and 29 January 2021
- Implement a participatory district and town council planning for the 3 town and 7 district council
- To agree with 3 town and 7 district councils on villages and human resource sharing for PFP 2 implementation
- Draft and signing of 10 MoUs with 3 town councils and 7 district councils
- Drafting and signing MoU with stakeholders in seed orchards development
- Completion of SMEs and woodlot assessment concept note and plan for the remaining Njombe and Mafinga forest industry cluster
- Completion of HRBA situational assessment concept note and plan for the remaining Njombe and Mafinga forest industry cluster
- Completion of the procurement for the mobile training unit items
- Organise the fourth programme steering committee meeting
- Completion of the service provision for forestry and market information systems service delivery
- Completion and implementation of the TGAs service provision contract with TTGAU

6. LESSONS LEARNT, CONCLUSIONS AND RECOMMENDATIONS

From its outset the programme has been beset by overwhelming problems in the forms of VAT regulations and the COVID-19 pandemic (delaying both recruitment and procurement and hampering communication) and as a result it has lost at least 6-months. The programme will need additional time.

Baseline studies, which are being completed relatively late during the implementation period, have led to improved understanding of forest sector related impoverishment in the southern highlands but the investment will fail if the findings are not translated into adjustments in the RBMF and programme implementation.

Innovations to formalise decision making processes have led to unintended consequences in the form of accumulating delays in implementation which can best be ameliorated through revision of the Programme Implementation Manual.

The pandemic has made both travel and meetings more difficult.

Annex 1 Result-based management framework

	Indicators	Baseline	Target (2030)	Means of verification	Responsibilities	Frequency	Assumptions
Overall objective							
To promote sustainable and inclusive private forestry that contributes to Tanzania's economic growth and alleviates poverty	The area of plantation forests in Southern Highlands	207,000 ha	Substantial increase	Plantation Resource Mapping based on the FAO/UTU methodology			Demand for forest products and forestry value chains develop in such a way that tree growing, and wood processing are profitable and inclusive.
	The absolute value of the private forestry sector and the proportion of its contribution to the Tanzanian economy	841.4 million USD (1,202,000 million TZS), or 4% of the GDP (2010)	Value increased significantly by year 2030	TRA, National Bureau of Statistics			
	The total production of industrial round wood in Southern Highlands' private plantations in 2030 and the proportion of that amount as a percentage of the total production of industrial round wood in the nation	Total production in Tanzania: 2,527,000 m ³ per year	National self-sufficiency in wood products increased significantly beyond without programme scenario	FAOSTAT, National Bureau of Statistic			
	The real mean rural expenditure per capita in the programme area compared to mean rural expenditure per capita in the nation as a whole.	Rural (2011/12): TZS 52,764 per capita per month Mainland (2011/12): TZS 62,386 per capita per month	Positive trend compared to the rest of Tanzania	<ul style="list-style-type: none"> • World Bank publications • URT public expenditure review • TASAF 			

	Indicators	Baseline	Target (Phase 2)	Means of verification	Responsibilities	Frequency	Assumptions
Outcome							
A socially sensitive, environmentally sustainable, financially profitable private forestry sector, including tree growers, SMEs as well as their organisations and service providers, exists in the Southern Highlands of Tanzania	At least 50% of PFP 2 supported tree growers in tree growers' associations are managing their woodlots according to Best Operating Practices (BOPs)	Makete FIC: 14% of woodlot owners have at least one woodlot abiding to BOPs. Njombe FIC: [Pending] Mafinga FIC: [Pending]	Makete FIC: 50% of woodlot owners have at least one woodlot abiding to BOPs. Njombe FIC: [Pending] Mafinga FIC: [Pending]	Survey on smallholders' woodlots	MEE (survey planning & implementation)	Baseline & Endline	Government policies continue to support private sector forestry development and related value chains.
	30% of SMEs supported by PFP 2 adopt innovative processing technologies and practices reducing waste and improving profitability	Makete FIC: 3% of SMEs reported adoption of improved practices. Njombe FIC: [Pending] Mafinga FIC: [Pending]	Makete FIC: 30% of SMEs reported adoption of improved practices. Njombe FIC: [Pending] Mafinga FIC: [Pending]	<ul style="list-style-type: none"> • Reporting by supported SMEs • Survey among SMEs 	<ul style="list-style-type: none"> • FPPE • MEE (survey planning and implementation) 	Baseline & Endline	
	Probability of households to fall under (i) food poverty line; (ii) national poverty line; and (iii) 2x national poverty line in target communities	Makete FIC: (i) 4.6% (ii) 17.4% (iii) 67.1% Njombe FIC: [Pending] Mafinga FIC: [Pending]	Reduced probability of household to fall under poverty. [Data to be aggregated by FIC]	Household survey	<ul style="list-style-type: none"> • SEE • MEE (survey planning and implementation) 	Baseline & Endline	
	The number of vulnerable people that have been capacitated and are participating in the forest sector value chain	0	1,500 of vulnerable people will be capacitated and participating in forest sector value chain	<ul style="list-style-type: none"> • PFP 2 internal reporting • TTGAU and TGA extension reports 	<ul style="list-style-type: none"> • Extension staff (data collection) • FICCs (data compilation) 	Endline	
	Increased income to women and vulnerable people from trading round wood, sawn wood, and charcoal	Makete FIC: 135,424 TZS per female headed HH annually. 118,814 TZS per vulnerable HH annually Njombe FIC:	Makete FIC: 200,000 TZS per female headed HH annually; 180,000 TZS per vulnerable HH annually	Household survey	<ul style="list-style-type: none"> • SEE • MEE (survey planning and implementation) 	Baseline & Endline	

	Indicators	Baseline	Target (Phase 2)	Means of verification	Responsibilities	Frequency	Assumptions
		[Pending] Mafinga FIC: [Pending]	Njombe FIC: [Pending] Mafinga FIC: [Pending]				
	Increased CESS and VAT collection from forestry sector in forest industry clusters	Makete FIC: Makete DC: CESS = 750,000,000 VAT = [Pending] Njombe FIC: Njombe TC: CESS = 2,432,317,697 VAT = [Pending] Mafinga FIC: Mufindi DC: CESS = 5,064,577,885TZS VAT = 9,762,052,009TZS	CESS and VAT increased	<ul style="list-style-type: none"> • District revenue and tax reports • TRA 	FICCs (data collection)	Annual	
Result area 1							
1.1. Private forestry organizations are strengthened	Number of officially registered TGAs in forest industry development clusters	[To be updated]	All PFP 2 supported TGAs are officially registered	<ul style="list-style-type: none"> • TGA registration documents • District records 	FICCs (data collection)	Annual	Private forestry organizations are an effective means of collaboration between tree growers
	Number of milestones reached by PFP 2-facilitated TGAs in: (i) TGA administration and management, and (ii) TGA service delivery to their members.	0	(i) 720 of milestones reached by PFP 2-facilitated TGAs in TGA administration and management (ii) 200 of milestones reached by PFP 2-facilitated TGAs in TGA service delivery to their members.	Survey-based assessment	<ul style="list-style-type: none"> • MEE • TTGAU Manager 	Annual	
	Number of TGAs paying their membership subscriptions to the TTGAU	9		TTGAU database	TTGAU Manager (reporting to PFP)	Annual	

	Indicators	Baseline	Target (Phase 2)	Means of verification	Responsibilities	Frequency	Assumptions
	Share of women and vulnerable people in members of PFP-2-facilitated TGAs	Makete FIC: 32% during PFP 2 (share of women) Njombe FIC: [Pending] Mafinga FIC: [Pending]	Makete FIC: 35% during PFP 2 Njombe FIC: [Pending] Mafinga FIC: [Pending]	TGA member lists	<ul style="list-style-type: none"> Extension staff (data collection) FICCs (data compilation) 	Annual	
	Participation of women in management bodies of (i) TTGAU and (ii) individual TGAs	(i) 19% (ii) 27% (PFP 1)	(i) 33% (ii) 40%	<ul style="list-style-type: none"> Reporting by TTGAU Survey among TGAs 	TTGAU Manager (data collection & reporting to PFP)	Annual	
1.2. Stakeholders' capacity in tree-growing has been strengthened.	Number of internships (female and male) supported by PFP 2	0	20 (At least 50% female)	PFP internal reporting	FICCs	Annual	Tree growers wish to improve their forestry practices
	PFP facilitated seed orchards under sustainable management and improved seeds being marketed to smallholders	(i) Sustainability management unclear (ii) No seeds marketed	(i) All PFP supported seed orchards and seed stands sustainably management (ii) Seed from Idete/Holo and MPM marketed to smallholders				Government of Tanzania supports competence-based forestry education
	Number of village leaders and influencers familiarised and trained on forestry as livelihoods	0	300 village leaders and influencers	PFP internal reporting	<ul style="list-style-type: none"> Extension staff (data collection) FICCs (data compilation) 	Annual	
	Number of participants (female and male) in field days, workshops, and exchange visits	0	10,000 participants (at least 3,300 are female)	PFP internal reporting	<ul style="list-style-type: none"> Extension staff (data collection) FICCs (data compilation) 	Annual	
	Number of (i) people participating in forestry training and extension services per age group, and (ii) represented TGAs	0	(i) At least 1,650 of people aged between 15 to 35 (ii)>40 TGAs	<ul style="list-style-type: none"> PFP internal reporting FWITC training reports 	<ul style="list-style-type: none"> Extension staff (data collection) FICCs (data compilation) FWITC (data compilation) 	Annual	

	Indicators	Baseline	Target (Phase 2)	Means of verification	Responsibilities	Frequency	Assumptions
	Number of women and vulnerable people participating in forestry training and extension services	0	4,000	<ul style="list-style-type: none"> PFP internal reporting FWITC training reports 	<ul style="list-style-type: none"> Extension staff (data collection) FICCs (data compilation) FWITC (data compilation) 	Annual	
	Number of students (female and male) enrolling and matriculating from accredited VETA level 1-2-3 forestry attendant courses	0	N/A pending FWITC site procurement confirmation	VETA Tanzania database and registers	FPPE	Annual	
	Share of nurseries using (i) improved seed and (ii) improved practices in villages supported by PFP 2	Makete FIC: (i) 66% (2/3) (ii) No improved practices Mafinga FIC: <i>[Pending]</i> Njombe FIC: <i>[Pending]</i>	Makete FIC: (i) 80% (ii) 20% Mafinga FIC: <i>[Pending]</i> Njombe FIC: <i>[Pending]</i>	Survey among nurseries	MEE (survey planning & implementation)	Baseline & Endline	
	Number and sales volume of containerised tree seedling nurseries in Tanzania	(i) 2 nurseries (ii) 452,000 seedlings (sales)	(i) 5 nurseries (ii) 16,000,000 seedlings (sales)	Enquiries with authorities and nurseries	FWITC Manager	Annual	
	Number of individual woodlot management plans produced through forest information system	0	2,400 individual woodlot management plan	FIS records	<ul style="list-style-type: none"> FICCs MEE 	Annual	
	Increased area share of TGA woodlots showing improved silvicultural practices in villages supported by PFP 2	Makete FIC: Area share with good standard of: (i) Stocking: 24% (ii) Pruning: 31% (iii) Weeding: 25% Mafinga FIC: <i>[Pending]</i> Njombe FIC: <i>[Pending]</i>	Makete FIC: Area share with good standard of: (i) Stocking: > 70% (ii) Pruning: > 70% (iii) Weeding: 40% Mafinga FIC: <i>[Pending]</i> Njombe FIC: <i>[Pending]</i>	Survey on smallholders' woodlots	MEE (survey planning & implementation)	Baseline & Endline	

	Indicators	Baseline	Target (Phase 2)	Means of verification	Responsibilities	Frequency	Assumptions
	Increased share of TGA tree growers adopting improved silvicultural practices in villages supported by PFP 2	Makete FIC: At least one woodlot with good standard of: (i) Stocking: 27% (ii) Pruning: 44% (iii) Weeding: 5% Mafinga FIC: <i>[Pending]</i> Njombe FIC: <i>[Pending]</i>	Makete FIC: At least one woodlot with good standard of: (i) Stocking: > 70% (ii) Pruning: > 70% (iii) Weeding: 40% Mafinga FIC: <i>[Pending]</i> Njombe FIC: <i>[Pending]</i>	Survey on smallholders' woodlots	MEE (survey planning & implementation)	Baseline & Endline	
	Total area of naturally regenerated pine stands brought into production through programme support	0	1,000 ha	Programme internal reporting	FICCs (data collection)	Annual	
	Maturing TGA forest plantations on the right track in producing high value forest products (quality sawlogs, transmission poles etc.)	Makete FIC: 11% of total woodlot area complies with the criteria Mafinga FIC: <i>[Pending]</i> Njombe FIC: <i>[Pending]</i>	Makete FIC: 45% of total woodlot area complies with the criteria Mafinga FIC: <i>[Pending]</i> Njombe FIC: <i>[Pending]</i>	Survey on smallholders' woodlots	MEE (survey planning & implementation)	Baseline & Endline	
	Number of people (female and male) employed in the forestry value chain in villages supported by PFP 2	Makete FIC: (i) 384 women (ii) 670 men Mafinga FIC: <i>[Pending]</i> Njombe FIC: <i>[Pending]</i>	Makete FIC: (i) 1,000 female (ii) 2,000 male Mafinga FIC: <i>[Pending]</i> Njombe FIC: <i>[Pending]</i>	<ul style="list-style-type: none"> • Reporting by supported SMEs • Survey among SMEs 	FPPE & MEE (survey planning & implementation)	Baseline & Endline	
1.3. Tree growers' access to forest financing increased and diversified	Volume of loans to tree growers in PFP 2 supported TGAs	Makete FIC: 64,080 TZS per tree grower HH; 265 million TZS in all tree grower HHs in 23 villages Mafinga FIC: <i>[Pending]</i> Njombe FIC:	Increase of loans to tree growers in PFP 2 supported TGAs	Survey among TGA members	<ul style="list-style-type: none"> • SEE • MEE (survey planning and implementation) 	Annual	Forestry funds are available, and the risks can be satisfactorily mitigated

	Indicators	Baseline	Target (Phase 2)	Means of verification	Responsibilities	Frequency	Assumptions
		[Pending]					
	Volume of loans to vulnerable people and female headed households engaged in tree growing in villages supported by PFP 2	Makete FIC: Vulnerable HHs: 14,243 TZS and 21.2 million TZS; female-headed HHs 27,622 and 39.9 million TZS; per HH and total in 23 villages respectively Mafinga FIC: [Pending] Njombe FIC: [Pending]	Increased volume of loans to vulnerable people and female headed house.....	Survey among TGA members	<ul style="list-style-type: none"> • SEE • MEE (survey planning and implementation)	Annual	
	Number of individuals (female and male) lending from PFP/TTGAU-supported VSLAs	TTGAU: 387 female & 350 male	Increase in number of individuals (female and male) lending from PFP/TTGAU-supported VSLAs	VSLA bookkeeping reports	<ul style="list-style-type: none"> • SEE • TTGAU Manager 	Annual	
	A carbon forestry project has been certified in the programme area	0	1	List of certified projects in internet	CTA	Endline	
1.4. People have increased capacity and resources to manage fires	Landscape-level planning has been introduced in two example cases	0	2	Landscape level plans	LUPE	Endline	All stakeholders believe that fires can be controlled by collective actions
	One regional fire protection coordinating body established and operational	0	1	Minutes of coordination meetings	FICCs	Endline	
	No more than 5% of plantation area in PFP 2 supported TGAs destroyed by fire in any year	0	5%	<ul style="list-style-type: none"> • Field surveys based on reported wildfires • Remote sensing data 	<ul style="list-style-type: none"> • Extension staff (field data collection) • FICCs (field data compilation) • LUPE (remote sensing data compilation) 	Annual	
	Number of extension events organized, and media channels applied on forest fire management	0	240 extension events organized and media channels applied on forest fire management	PFP internal reporting	FICCs	Annual	

	Indicators	Baseline	Target (Phase 2)	Means of verification	Responsibilities	Frequency	Assumptions
	Number of women and vulnerable people capacitated in forest fire management and control	0	2,400	PFP internal reporting	<ul style="list-style-type: none"> Extension staff (data collection) FICCs (data compilation) 	Annual	
1.5. Strengthened communication	District governments involved in current PFP 2 AWP understand the rationale for PFP 2 and are knowledgeable of its activities	0	9 Districts includes: 3 Town councils and 7 District councils	Interviews with district governments	FICCs	Annual	<p>Stakeholders are interested in engaging and communicating with each other</p> <p>PFP can access the appropriate means of communication</p>
	TGA members are more aware of policies and regulations relating to land acquisition and private tree growing	0	1,000	Survey	FICCs	Endline	
	Number of engagement and meetings with key stakeholders and partners	0	200 engagement and meetings	Meeting minutes, BTORs, and event reports	All programme staff	Annual	
	Number of visitors and downloads from the PFP website	0	(i) 24,000 visitors (ii) 1,200 downloads	PFP website	ITE	Annual	
	Number of information sharing, familiarization, and awareness raising events	0	15	PFP internal reporting	<ul style="list-style-type: none"> FICCs (cluster-based) MEE (general) 	Annual	
	Number of awareness raising events for women and vulnerable people on policies related to land access, ownership, and private tree growing	0	40 awareness raising events for women and vulnerable people on policies related to land access, ownership, and private tree growing	PFP internal reporting	FICCs	Annual	
	TTGAU has regular national level meetings with government and private sector	0	Maintained	<ul style="list-style-type: none"> Meeting minutes TTGAU reporting 	TTGAU	Annual	
1.6. Institutionalization of private forestry	Increased number of district forest extension officers deployed and working in forestry value chain development	[To be updated in the third quarter]	10	District reports	FICCs (data collection)	Annual	Government wishes to engage and create an enabling environment for forestry

	Indicators	Baseline	Target (Phase 2)	Means of verification	Responsibilities	Frequency	Assumptions
	Number of annual district workplans that include PFP 2 supported activities	0	20 (DC & TC)	District workplans	FICCs (data collection)	Annual	There are ways that vulnerable people can be supported by private forestry sector
	Number of CCROs issued for private plantations and facilitated by PFP	0	100 CCROs	District reports	• FICCs (data collection) • LUPE (data compilation)	Annual	
	Number of CCROs issued to female headed households and vulnerable people and facilitated by PFP	0	50 CCROs	PFP internal reporting	• FICCs (data collection) • LUPE (data compilation)	Annual	
	Number of VLUPs established in collaboration with districts	0	40 VLUPs	VLUP registry in districts	LUPE	Annual	
	Share of vulnerable people in the VLUP process participants	0	25% of vulnerable people in the VLUP process participants	VLUP documents and reports from the preparation process	LUPE (data collection)	Annual	
	Guidance and advisory services provided to PPP development	0	2	PFP internal reporting	FICCs	Annual	
	Number of forest investment profiles for plantation establishment, wood processing and transportation of forest products	0	1	Printed investment profiles	FICCs	Annual	
	District governments adopt BOPs for woodlot management	0	1	Guidelines issued by district governments	FICCs	Endline	
Result area 2							
2.1. Capacity of SMEs and their employees strengthened	Number of (i) people in different age groups participating in wood industry training and extension services, and (ii) represented SMEs	0	(i) At least 2,000 of people aged between 15 to 35 (ii) >800 SMEs	• PFP internal reporting • FWITC training reports	• Extension staff (data collection) • FICCs (data compilation) • FWITC (data compilation)	Annual	SMEs and their employees are interested in learning new skills Government of Tanzania supports competence-based

	Indicators	Baseline	Target (Phase 2)	Means of verification	Responsibilities	Frequency	Assumptions
	Number of women and vulnerable people participating in wood industry training and extension services	0	600	<ul style="list-style-type: none"> PFP internal reporting FWITC training reports 	<ul style="list-style-type: none"> Extension staff (data collection) FICCs (data compilation) FWITC (data compilation) 	Annual	forestry education An interested private sector or other non-government party can be found to run the FWITC
	Number of students (male and female) enrolling and matriculating from accredited VETA level 1-2-3 wood processing courses	0	N/A	VETA Tanzania database and registers	FPPE	Annual	
	Number of trainees (Male and Female) on charcoal and briquette technologies	0	1,000 trainees	FWITC training report	FWITC Manager		
	Proportion of PFP 2 supported SMEs employing women and vulnerable people	Makete FIC: (i) 33% SMEs employ women (ii) 30% SMEs employ vulnerable people Mafinga FIC: <i>[Pending]</i> Njombe FIC: <i>[Pending]</i>	Proportional increased of PFP 2 supported SMEs employing women and vulnerable people	Reporting by supported SMEs	<ul style="list-style-type: none"> Extension staff (data collection) FICCs (data compilation) 	Annual	
	Share of female employees in PFP 2 supported SMEs	Makete FIC: 36% Mafinga FIC: <i>[Pending]</i> Njombe FIC: <i>[Pending]</i>	Makete FIC: >36% Mafinga FIC: <i>[Pending]</i> Njombe FIC: <i>[Pending]</i>	Reporting by supported SMEs	<ul style="list-style-type: none"> Extension staff (data collection) FICCs (data compilation) 	Annual	
	Share of SMEs participating in PFP 2 employing their workforce in decent jobs including equal pay for equal work, equal pay for men and women for same work, and legally required social security payments	Makete FIC: No decent jobs Mafinga FIC: <i>[Pending]</i> Njombe FIC: <i>[Pending]</i>	Decent jobs increased	Reporting by supported SMEs	<ul style="list-style-type: none"> Extension staff (data collection) FICCs (data compilation) 	Annual	

	Indicators	Baseline	Target (Phase 2)	Means of verification	Responsibilities	Frequency	Assumptions
	Number of SMEs participated in awareness raising on employers' duties and rights of workers	0	800 SMEs	PFP internal reporting	FICCs	Annual	
2.2. Increased access of SMEs to financing	Share of PFP 2 supported SMEs having appropriate business plan and credit worthy (SME registered and having bank account)	Makete FIC: (i) 2% of SMEs have business plans (ii) 0% SMEs Credit worthy Mafinga FIC: [Pending] Njombe FIC: [Pending]	Makete FIC: (i) >30% of SMEs have business plans (ii) >15% SMEs Credit worthy Mafinga FIC: [Pending] Njombe FIC: [Pending]	Reporting by supported SMEs	<ul style="list-style-type: none"> • Extension staff (data collection) • FICCs (data compilation) 	Annual	<p>SMEs are sufficiently viable to be funded</p> <p>SMEs are able to secure multi-year raw material contracts</p>
	Number of interventions organized with financial institutions for awareness building of the need and merits of financing SMEs in the forest products sector	0	25	PFP internal reporting	<ul style="list-style-type: none"> • FICCs (cluster-based) • FPPE (general) 	Annual	
	Number of PFP 2 supported SMEs financed by impact investment funds, private banks or investment institutions	Makete FIC: 2/174 Mafinga FIC: [Pending] Njombe FIC: [Pending]	Makete FIC: 20 Mafinga FIC: [Pending] Njombe FIC: [Pending]	Reporting by supported SMEs			
2.3. Improved recovery of raw materials and quality of products along the processing value chain	Shares of logs by their delivery to different end uses (e.g. sawmilling, pole production, and bioenergy) in villages supported by PFP 2	Makete FIC: 83% delivered to sawmilling. 17% delivered to bioenergy. 0% pole production Mafinga FIC: [Pending] Njombe FIC: [Pending]	Increased share of logs by their delivery to different end uses (e.g. sawmilling, pole production, and bioenergy) in villages supported by PFP 2	Survey among SMEs	<ul style="list-style-type: none"> • FPPE • MEE (survey planning and implementation) 	Baseline & Endline	<p>Government supports the implementation of the grading system</p> <p>Market is sensitive to the product quality</p>
	Number of charcoal and briquette making technologies	1	5				

	Indicators	Baseline	Target (Phase 2)	Means of verification	Responsibilities	Frequency	Assumptions
	Recovery rate in PFP 2 supported sawmilling SMEs	Makete FIC: Estimated 35% (ding dong sawmills) Mafinga FIC: [Pending] Njombe FIC: [Pending]	Makete FIC: >35% Mafinga FIC: [Pending] Njombe FIC: [Pending]	<ul style="list-style-type: none"> • Reporting by supported SMEs • Survey among SMEs 	<ul style="list-style-type: none"> • FPPE • MEE (survey planning and implementation)	Baseline & Endline	
	Number of PFP 2 supported SMEs having long-term timber procurement contracts with private tree growers or TFS	Makete FIC: 4% of sawmilling SMEs (2/54 in BL survey) Mafinga FIC: [Pending] Njombe FIC: [Pending]	Makete FIC: >4% Mafinga FIC: [Pending] Njombe FIC: [Pending]	Reporting by supported SMEs			
	Percentage and volumes of graded sawn timber produced and sold in the market in forest industry clusters	Makete FIC: (i) 66% (ii) Estimated 66,000 m3 produced annually in Makete Mafinga FIC: [Pending] Njombe FIC: [Pending]	Makete FIC: (i) >66% (ii) Above the estimated 66,000 m3 produced annually in Makete Mafinga FIC: [Pending] Njombe FIC: [Pending]	Survey among SMEs	<ul style="list-style-type: none"> • FPPE • MEE (survey planning and implementation)	Baseline & Endline	
	Log and sawn timber standards approved and in use	0	N/A	Tanzania Bureau of Standards	CTA	Endline	
	Number of innovations and development projects in primary timber processing and further wood processing facilitated by PFP 2	0	15	PFP internal reporting	FPPE	Annual	
2.4. Improved communication and integration of forestry and wood industry associations, enterprises, and clients	Number of TGAs and forestry enterprises registered to use the Market Information System (MaIS)	0	(i) 40 TGAs (ii) 80 SMEs	MaIS user register	MSDS	Annual	Stakeholders are willing to engage with each other and there is value for them to do so

	Indicators	Baseline	Target (Phase 2)	Means of verification	Responsibilities	Frequency	Assumptions
	Number of hits, entries and inquiries from the MaIS by TGAs, industry associations, forest and wood processing enterprises, and clients of forest products market	0	N/A <i>(Upon establishment of MaIS)</i>	MaIS statistics	MSDS	Annual	
	Number of association meetings and assemblies between the associations, government, and stakeholders	0	6	Reporting by stakeholder associations		Annual	
	Number of members frequently participating in forest industry cluster meetings in Makete, Mufindi, and Njombe	0	400	PFP internal reporting		Annual	
	Number of joint ventures established in forestry and wood industry operations facilitated by PFP 2	0	6	PFP internal reporting	<ul style="list-style-type: none"> • FICCs (data collection) • FICCs (data compilation) 	Annual	

Annex 2 Suggested changes to RBMF indicators of PFP 2

RBMF level	Original indicator (RBMF version 26 May 2020)	Suggested revision	Justification
Overall objective	Inclusion of vulnerable and marginalised people in TGAs, enterprises and institutions within the forestry value chain	<i>To be removed</i>	<ul style="list-style-type: none"> - Introduced during PFP 2 inception phase, while the overall objective indicators should arguably remain as unchanged as possible - Difficult to quantify, unlike other indicators in the group - No definite data source available, unlike other indicators in the group - The same aspect covered by multiple other indicators on output level
Outcome	30% of SMEs in PFP 2 areas adopt innovative processing technologies and practices reducing waste and improving profitability	30% of SMEs supported by PFP 2 adopt innovative processing technologies and practices reducing waste and improving profitability	Scope narrowed down
	Proportion of households in target communities showing increased wealth, disaggregated by wealth rank	Probability of households to fall under (i) food poverty line; (ii) national poverty line; and (iii) 2x national poverty line in target communities	Original problematic to measure. New version enables usage of PPI score.
	<i>Not included</i>	Increased income to women and vulnerable people from trading round wood, sawn wood, and charcoal	Relocated from output 1.3
	Increased monthly CESS and VAT collection in the forest sector by AWP districts	Increased CESS and VAT collection from forestry sector in forest industry clusters	Wording changed to be more adequate
Output 1.1	Number of officially registered TGAs with constitutions	Number of officially registered TGAs in forest industry development clusters	Narrows down the target group. Constitution is a prerequisite for registration.

RBMF level	Original indicator (RBMF version 26 May 2020)	Suggested revision	Justification
	Share of TGAs in the programme area having functioning management systems in place	Number of milestones reached by PFP-2-facilitated TGAs in: (i) TGA administration and management, and (ii) TGA service delivery to their members.	Compatibility with the outputs of the consultancy work by Thomas
	<i>Not included</i>	Share of women and vulnerable people in members of PFP-2-facilitated TGAs	There was a lack of an indicator measuring representativeness in membership base of TGAs receiving facilitation from PFP 2
	Participation of women, vulnerable people and different age classes in TTGAU/TGAs management bodies	Participation of women in management bodies of (i) TTGAU and (ii) individual TGAs	Disaggregation of the data as per the original indicator is cumbersome and of limited relevance due to just 5–7 people in these management bodies
	Inclusion and representativeness of women and vulnerable people reflected in TGAs' constitutions	<i>To be removed</i>	Laborious to assess
Output 1.2	<i>Not included</i>	Number of internships (female and male) supported by PFP	Reintroduced as per the recommendation by PSC
	<i>Not included</i>	PFP facilitated seed orchards under sustainable management and improved seeds being marketed to smallholders	Introduced after realising that no indicator related to seed orchards development
	Number of participants in field days, workshops and exchange visits	Number of participants (female and male) in field days, workshops, and exchange visits	Added gender disaggregation
	Number, gender and age of (i) people participating and (ii) represented TGAs in forestry training and extension services	Number of (i) people in different age groups participating in forestry training and extension services, and (ii) represented TGAs	Disaggregation of the data as per the original indicator is cumbersome. Also, another indicator already includes the gender aspect.
	Share of nurseries in PFP-supported villages that are using (i) improved seed and (ii) improved practices	Share of nurseries using (i) improved seed and (ii) improved practices in villages supported by PFP 2	Minor revision for consistent wording between indicators

RBMF level	Original indicator (RBMF version 26 May 2020)	Suggested revision	Justification
	<i>Not included</i>	Number of individual woodlot management plans produced through forest information system	Reformulation of an indicator removed from under output 1.5
	Increased area share of TGA woodlots showing improved silvicultural measures in programme villages	Increased area share of TGA woodlots showing improved silvicultural practices in villages supported by PFP 2	Minor revision for consistent wording between indicators
	Increased share of TGA tree growers practically adopting improved silvicultural practices in programme villages	Increased share of TGA tree growers adopting improved silvicultural practices in villages supported by PFP 2	Minor revision for consistent wording between indicators
	Proportion of tree growers in PFP phase 1 TGAs adopting Best Operating Practices (BOPs) for thinning and pruning	<i>To be removed</i>	Currently there is no human or other resource allocation neither at PFP nor TTGAU to address this
	Total area of naturally regenerated pine stands brought into production	Total area of naturally regenerated pine stands brought into production through programme support	Wording changed to be slightly more specific
	Number of people employed in the forestry value chain in programme villages (disaggregated by gender and age)	Number of people (female and male) employed in the forestry value chain in villages supported by PFP 2	Removed disaggregation by age because of low practical applicability (these figures are based on extrapolation of survey results).
	Number of jobs created along the forestry value chain for women and vulnerable people	<i>To be removed</i>	Very difficult to find a method that would reliably quantify this.
Output 1.3	Volume of loans to tree growers in TGAs	Volume of loans to tree growers in PFP 2 supported TGAs	Scope narrowed down
	Volume of loans to vulnerable people and female headed households engaged with forestry	Volume of loans to vulnerable people and female headed households engaged in tree growing in villages supported by PFP 2	Scope narrowed down

RBMF level	Original indicator (RBMF version 26 May 2020)	Suggested revision	Justification
	Number of individuals (female and male) lending from VSLAs	Number of individuals (female and male) lending from PFP/TTGAU-supported VSLAs	Scope narrowed down
	Increased income to women and vulnerable people from trading round wood, sawn wood, and charcoal	<i>To be removed</i>	Relocated under outcome level due to low relevance in relation to output 1.3 or any other output
Output 1.4	Number of women and vulnerable people participated in extension events on forest fire control	<i>To be removed</i>	The link between this indicator and improving the lives of the people in the target group is ambiguous. Furthermore, these figures are already counted for in another indicator, under output 1.2.
Output 1.5	Level of alignment of the key stakeholders and partners with PFP 2	<i>To be removed</i>	The level of alignment does not necessarily indicate strengthened communication as per the output. This aspect is worth following as it describes the programme operational environment, but it is suggested to be dropped as an indicator.
	Tree growers are well informed about forestry markets	<i>To be removed</i>	This indicator should be linked with MaIS, which is covered under output 2.4
	Number of TGAs regularly using the FMIS in their operational management	<i>To be removed</i>	It is not realistic to expect, based on the current sketches for FMIS, that individual TGAs will be able to directly operate and utilise it. Replaced by a new indicator concerning FIS & woodlot management plans under output 1.2.
	Number of visitors and downloads from the PFP website	Number of visitors and report downloads from the PFP website	Minor specification included to reduce indicator vagueness
	<i>Not included</i>	Number of information sharing, familiarization, and awareness raising events	Relocated from output 2.5 and slightly modified

RBMF level	Original indicator (RBMF version 26 May 2020)	Suggested revision	Justification
	TGAs have regular meetings with local government and SMEs	<i>To be removed</i>	Ambiguous indicator which currently both PFP and TTGAU lack capacity to address
Output 1.6	Number of CCROs issued for private plantations and facilitated by PFP (female and male)	Number of CCROs issued for private plantations and facilitated by PFP	Gender disaggregation not needed since CCROs issued for women is included in another indicator. <i>Note:</i> if recommendation by HRBA situational assessment is followed, this indicator is redundant
	Number of CCROs issued to female headed households and vulnerable people	Number of CCROs issued to female headed households and vulnerable people and facilitated by PFP	Scope narrowed down
	Number of VLUPs established in collaboration with districts and implemented by villages	Number of VLUPs established in collaboration with districts	Inclusion of the implementation aspect requires for a separate assessment to be made. If the PMT wants it included, it is suggested to be separated as an individual indicator.
	Number of vulnerable people involved in VLUPs	Share of vulnerable people in the VLUP process participants	The original indicator is vague. Andrew was consulted for the suggested revision, which now measures whether vulnerable groups were represented.
	Number and total area of land allocations to vulnerable people within the PFP-supported VLUPs	<i>To be removed</i>	Not certain whether VLUP land allocations to vulnerable groups collectively is going to continue during Phase 2. Suggested to be removed and the CCRO indicator related to vulnerable people to be kept in instead.
	A clear definition of vulnerability for PFP 2 intervention	<i>To be removed</i>	This was done and it is accredited for in the PD draft. Also, indicator measures output rather than impact. Little reason to keep it included in the revised RBMF.

RBMF level	Original indicator (RBMF version 26 May 2020)	Suggested revision	Justification
	Volume of guidance and advisory services provided to PPP development	Guidance and advisory services provided to PPP development	Volume is difficult to measure in this context. With this indicator it is recommended to keep it less defined to allow for flexible reporting.
Output 2.1	Number, gender and age of (i) people participating and (ii) represented SMEs in wood industry training and extension services	Number of (i) people in different age groups participating in wood industry training and extension services, and (ii) represented SMEs	Disaggregation of the data as per the original indicator is cumbersome. Also, another indicator already includes the gender aspect.
	FWITC becomes an autonomous organization, is able to raise its funding and operates as a profitable business unit.	<i>To be removed</i>	Suggested to altogether reconsider the target-setting incorporated in this indicator, which also combines three different aspects. Reaching financial independence for FWITC is not featured anywhere else in the PD.
	Number and type of mobile training units operating in the PFP 2 villages	<i>To be removed</i>	Deploying the mobile training units suits better as a workplan target than an indicator
	Number and type of technical consultancy services for wood processing companies facilitated by PFP	<i>To be removed</i>	The indicator observed to be not practical
	<i>Not included</i>	Share of female employees in PFP 2 supported SMEs	Indicates three advancements: (i) improved working conditions in SMEs that do not disfavour women; (ii) women have been capacitated with same skill sets as men; (iii) equal consideration is given to women and men in recruitment processes
	<i>Not included</i>	Number of trainees (Male and Female) on charcoal and briquette technologies	This is to support the ongoing programme interventions on charcoal production which was missing in the RBMF

RBMF level	Original indicator (RBMF version 26 May 2020)	Suggested revision	Justification
	Number of SMEs participating in PFP 2 employing their workforce in decent jobs including equal pay for equal work, equal pay for men and women for same work, and legally required social security payments	Share of SMEs participating in PFP 2 employing their workforce in decent jobs including equal pay for equal work, equal pay for men and women for same work, and legally required social security payments	Share of PFP 2 supported SMEs is more relevant to measure and easier to set targets for in this case than number of SMEs
	Income to women and vulnerable people through decent jobs within the value chain	<i>To be removed</i>	Unclear scope, difficult and laborious to measure, women & vulnerable people considered in other indicators
Output 2.2	Number of SMEs financed by impact investment funds, private banks or investment institutions like SIDO Tanzania	Number of PFP 2 supported SMEs financed by impact investment funds, private banks, or investment institutions	Scope narrowed down and the example removed, since in this case it may be more limiting than useful
Output 2.3	Percentage of logs sorted for different use and deliveries to primary wood processing like sawmills, panel factories and pulp & paper	Shares of logs by their delivery to different end uses (e.g. sawmilling, pole production, and bioenergy) in villages supported by PFP 2	Original indicator is ambiguous. Suggested approach is to report the shares of logs by their different end uses in PFP 2 supported villages, based on survey
	Percentage of recovery rate in PFP 2 supported SMEs	Recovery rate in PFP 2 supported sawmilling SMEs	Wording changed to be slightly more specific
	Number of SMEs having long-term timber procurement contracts with private tree growers or TFS	Number of PFP 2 supported SMEs having long-term timber procurement contracts with private tree growers or TFS	Scope narrowed down
	<i>Not included</i>	Number of charcoal and briquette making technologies	The intervention was not featured despite being implemented since PFP 1
	Percentage and volumes of graded sawn timber produced and sold in the market	Percentage and volumes of graded sawn timber produced and sold in the market in forest industry clusters	Geographical scope added
	<i>Not included</i>	Log and sawn timber standards approved and in use	Relocated from output 2.5

RBMF level	Original indicator (RBMF version 26 May 2020)	Suggested revision	Justification
	Number and type of primary timber processing and wood further processing innovations and development projects	Number of innovations and development projects in primary timber processing and further wood processing facilitated by PFP 2	Cannot assess type without a relevant typology. Scope narrowed down.
	Number of forest and wood product innovations	<i>To be removed</i>	Duplicates with the previous indicator
	Volume of investment in wood processing technology development in the programme area	<i>To be removed</i>	Very challenging indicator to measure. If kept in, recommended to add to the indicator "...facilitated by PFP 2"
	A plan with a road map for promoting use of wood and bioenergy products	<i>To be removed</i>	More suitable to be included as a workplan target than an indicator
Output 2.4	Number and inclusiveness of members participating in PFP 2 forest industry clusters in Makete, Mufindi and Njombe	Number of members frequently participating in forest industry cluster meetings in Makete, Mufindi, and Njombe	Indicator revised to be more countable
	Number and type of joint ventures established in forestry and wood industry operations	Number of joint ventures established in forestry and wood industry operations facilitated by PFP 2	Cannot assess type without a relevant typology. Scope narrowed down for higher relevance and monitorability.
	Number of changes resulting from forest industry associations	<i>To be removed</i>	Vague indicator and limited causal relationship with PFP 2
Output 2.5	<i>Note: Output 2.5 is suggested to be removed altogether and merged into other outputs</i>		
	Clear and transparent forest products taxation guideline	<i>To be removed</i>	More suitable to be included as a workplan target than an indicator
	Number of information sharing and familiarization events	<i>To be removed</i>	Relocated under output 1.5
	Log and sawn timber standards approved and in use	<i>To be removed</i>	Relocated under output 2.3

Annex 3 Procurement list and progress update

Note:

Most of the pending procurement items are to be procured upon resolving the FWITC land tenure issue. We intend to procure these remaining items when we have clear instruction from MNRT and their confirmation of site procurement.

Item and sub-item	Procurement justification	Status
3110 Procurement of 12-seater 4WD		Shelved
3111 Procurement of 12-seater 4WD		
3120 Industrial washing machine (n=1)		
3121 Industrial washing machine (n=1)	For maintaining of trainers and workers' clothes that will be recycled	Pending
3122 Industrial pressure washing machine (n=2)	For cars, machines, tractors and equipment maintenance and cleaning	Pending
3123 Industrial vacuum cleaners (n=2)	For cars and office cleaning and maintenance of project assets	Pending
3130 Professional forest harvesting tools and equipment		
3131 Professional chainsaws with a spare part kit (n=10)	For forestry mobile training units to train TGA members, farmers and loggers in the villages close to trainees	On progress Clearing procedures
3132 Consumables for chainsaw operations (n=10)	As above	On progress Clearing procedures
3133 Other tools and materials for chainsaws	As above	On progress Clearing procedures
3134 Hand tools set for chainsaw operators (n=10)	As above	On progress Clearing procedures
3135 Set of forest hand tools for training and demonstrations (n=10)	As above	On progress Clearing procedures
3136 Training equipment for chainsaw training and demonstration (2 sets)	As above	On progress Clearing procedures
3137 Brush cutter with spares and extra saw blades and trimmer heads (n=10)	As above	On progress Clearing procedures
3138 Heavy duty chain saw (80cc) for resawing of eucalyptus log	For forestry and sawmilling mobile training units to train TGA members, farmers, loggers and sawmillers for cutting of bog size eucalyptus log in the villages close to trainees	On progress Clearing procedures
3139 Timberjig and guide bars for the chainsaw to resaw eucalyptus sawlogs	For forestry and sawmilling mobile training units to train TGA members, farmers, loggers and sawmillers for cutting of bog size eucalyptus log in the villages close to trainees	On progress Clearing procedures
3140 Personal protective gears for chainsaws (n=50)		
3141 Personal protective gear for chainsaw operations (n=50)	For work safety both trainees and workers when working for PFP or are under training programmes of PFP	On progress Clearing procedures
3150 Mobile band saw and accessories for field based demonstration and FWITC-based training (n=2)		
3151 Mobile band saw and accessories for field based demonstration and FWITC-based training (n=1)	For establishing a wood processing mobile training units to train entrepreneurs, wood processors and	On progress Clearing procedures

Item and sub-item	Procurement justification	Status
	sawmillers in the villages and field close to trainees' homes	
3152 Grinding machine and setting device for maintenance of band saw blades for demonstration and training (n=1)	As above	On progress Clearing procedures
3153 Band saw blades for the band saw (n=100)	As above	On progress Clearing procedures
3154 Grinding stones and accessories for maintaining band saw blades	As above + to facilitate sawmillers and sawdoctors training at FWITC	On progress Clearing procedures
3155 Sawdoctoring machines for maintenance of carbide tipped circular saw blades and spring set saw blades	As above	On progress Clearing procedures
3156 Grinding stones and accessories for maintaining circular saw blades	As above	On progress Clearing procedures
3157 Multipurpose 6 cutter planer moulder + necessary grinders and knives (second-hand machine)	To demonstrate and introduce new high quality and value wood products for Tanzanian markets and to improve FWITC's sustainability through appropriate wood further processing operations to add value for wood products	Third quarter
3158 Hand tools and equipment for manufacturing of log cabin houses (2 sets)	As above, but to be done at the village levels to introduce new type of housing opportunities for villages around forests	Third quarter
3160 Joinery workshop equipment		
3161 Thicknesser planer	To demonstrate and introduce new high quality and wood products for Tanzanian markets and to improve FWITC's sustainability through appropriate wood further processing operations to add value for wood products	Third quarter
3162 Surface planer	As above	Third quarter
3163 Spindle moulder	As above	Third quarter
3164 Panel saw bench	As above	Third quarter
3165 Belt sanding machine	As above	Third quarter
3166 Mortising and lathe machine	As above	Third quarter
3167 Handheld tools set (angle grinders, sanding and drilling machines, planer machine, circular saw etc.)	As above	Third quarter
3168 Knife grinders	As above	Third quarter
3169 Consumables, grinding stones, knives, saw blades, screws, sandpapers, nail guns, nails etc.	As above	Third quarter
3170 FWITC training equipment, tools and materials (separate list of procurement)		
3181 Firefighting training with materials for training and trainers	This lump sum procurement is required for FWITC's short courses training and VETA 1-2-3 level formal trainings to be started at FWITC in July 2020. Separate procurement list is shown in annex 1	Pending
3182 Forest nursery training materials	As above	On progress
3183 Seed orchard training requirements	As above	On progress
3184 Sawmill and wood working tools and equipment	As above	Third quarter

Item and sub-item	Procurement justification	Status	
	3185 Sawdoctoring tools and equipment for training	As above	Fourth quarter
	3186 Tools and equipment for wood energy training	As above	Third quarter
	3187 Saw dust extraction system for wood working workshop and sawmill (2 sets)	As above	Third quarter
	3188 Briquettes extruder and hammer mill for pillow briquettes (second and machine)	As above	Fourth quarter
	3180 Tractor, heavy duty front end loader and hooklift tractor trailer with containers and accessories to establish mobile training units for forestry, wood processing and firewood making		
	3181 Tractor 175 hp fitted with protective guards for forestry and equipped with a heavy duty front end loader	Heavy duty well equipped forestry tractor is required for multi purposes e.g. transporting hooklifted forestry and wood processing mobile training units (container type) from village to village, for demonstrating of mobile circular saw operations with Slidetec mobile sawmill, hauling of logs and wood raw materials from forest to the road-side and processing units, material handling and loading at PFP's Makete, Njombe and Mafinga Industry Clusters	Manufacturing ongoing to be ready 1 st Quarter 2021/22
	3182 Hooklift tractor trailer suitable for moving mobile training unit containers between the villages and demonstration venues	Required for transporting special type of hooklifted / containerized mobile training units as explained above. Needed to organize training in the villages close to trainees' homes	Ordered to be ready 1 st Quarter 2021/22
	3183 Container for hooklift tractor trailer to be built as a mobile training unit for logging, harvesting and forest management	Required for establish mobile training units to organize forestry training and demonstrations in the villages close to trainees' homes (Container to be equipped with appropriate training materials, machines, equipment and tools in Finland before export and freight from Finland)	On progress Clearing procedures
	3184 Container for hooklift tractor trailer to be built as a mobile training unit for band saw and ding dong saw operations with saw doctoring equipment and tools	Required for establish mobile training units to organize wood processing training and demonstrations in the villages close to trainees' homes. (Container to be equipped with appropriate training materials, machines, equipment and tools in Finland before export and freight from Finland)	On progress Clearing procedures
	3185 Tools and equipment for two (2) containerized mobile training units (generator and set of hand tools)	Required for establishing appropriate forestry and wood processing mobile training units to organize PFP training in the villages close to trainees' homes	Ordered and fitted in the containers

Item and sub-item		Procurement justification	Status
	3186 Materials for construction of two (2) containerized mobile training units for forestry and wood processing training	As above	Ordered and fitted in the containers
	3187 Labour for construction of two (2) containerized mobile training units for forestry and wood processing training	Two mobile training units should be specifically built in Finland with all machines, equipment and tools ready-fixed to the container. Therefore, a service provider or company to be contracted for building the containers and equip them.	Utilized
	3189 Firewood making machine to demonstrate firewood making	Required for demonstrations to introduce options for better utilization of forest resources, especially from young (3-7 years) tree standings and introduction of new forest/wood product business to be invested	Fourth quarter
3190 Tractor mounted logging trailer with crane			
	3191 Tractor mounted logging trailer with crane	Required for demonstration, training and introduction of new forest harvesting technologies for wood transportation from forest to the roadside and production units	Ordered to be ready 1 st Quarter 2021/22
3210 Tractor mounted double drum winch for tracking pulling and hauling logs to the roadside			
	3211 Tractor mounted double drum winch for tracking pulling and hauling logs to the roadside	Required for both training and demonstrations to introduce appropriate forest haulage technologies within the forest plantations	Ordered to be ready 1 st Quarter 2021/22
	3212 Tractor mounted winch for tracking, pulling and hauling of small diameter logs to the roadside	Required for both training and demonstrations to introduce appropriate forest haulage technologies within the forest plantations	Ordered to be ready 1 st Quarter 2021/22
3220 Trade and professional publications and journals			
	3221 Trade and professional publications and journals	Needed for awareness improvement and knowledge sharing about new appropriate forest and wood processing technologies for PFP staff and trainees of PFP training programmes	Procured
3310 Car hire and gasoline for hired cars			
	3311 Car hire and gasoline for hired cars	Required for mobilizing the PFP staff for operations and implementation of PFP activities to achieve results and impact	On progress
3320 Car tracking system annual fee			
	3321 Car tracking system annual fee	As above	On progress
3330 Car tracking system installation			
	3331 Car tracking system installation	As above	Procured
3340 Project vehicles; insurances			
	3341 Project vehicles; insurances	As above	Procured
3350 Project vehicles; maintenance			
	3351 Project vehicles; maintenance	As above	On progress

Item and sub-item	Procurement justification	Status
3360 Fuel for programme cars		
3361 Fuel for programme cars	As above	On progress
3370 Project motorcycles; maintenance and insurance		
3371 Project motorcycles; maintenance and insurance	As above	On progress
3380 Fuel, motorcycles		
3381 Fuel, motorcycles	As above	On progress
3390 Drivers		
3391 Drivers, salaries	As above	Recruited
3392 Drivers, DSA and accommodation	As above	Recruited
3410 Office equipment		
3411 Computers 30 laptops for workers + 20 desktops for FWITC, 40 phones	Required to mobilize and facilitate newly recruited PFP staff and to establish FWITC with appropriate IT facilities	Laptops procured + 20 desktop waiting land acquisition waiting land acquisition
3412 Other office equipment	Required for facilitating effective PFP management and administration as well as implementation of planned activities	On progress
3420 Other office costs		
3421 Office rent and renovation, Iringa	As above	On progress
3422 Office rent and renovation, FWITC	As above	On progress
3423 Classrooms renovation at FWITC and toilet renovations at Iringa office	Required to organize PFP's internal staff training (newly recruited new staff) and to begin VET 1-2-3 level training in July 2020	Pending
3424 Hall renovations and library establishment for FWITC to establish a "Centre of Excellency for Forestry and Wood Technology Knowledge and Information"	Required, if FWITC is expected to be run sustainably through training courses, seminars, demonstrations and as a hub of information and knowledge centre for appropriate forestry and wood processing technologies	Pending
3425 FWITC sawmill and carpentry workshop construction and modification with conveyor constructions to the sawmill	Required for efficient production operations and appropriate wood technology training if sustainability of FWITC would need to be maintained	Pending
3426 Constructing a dormitory to FWITC for trainees	Required if the Government of Tanzania will purchase the FWITC site and FWITC will start organizing formal VET level 1-2-3 Wood Processing Attendant education. In this case there will be 30 students living at the FWITC site for about 10 months / 2-year period in which case it is more economical to construct FWITC's own dormitory and hostel facilities	Pending
3426 Hardware and equipment for PFP 2 communication systems development	This development is important for ensuring PFP 2 communication between PFP2 internal field stations and external partners, which is and will be required due to COVID-19 pandemic.	Procured

Item and sub-item	Procurement justification	Status
3430 Procurement A + B clearing and forwarding costs (lump sums in the table)		When due
3431 Customs clearance and agency fee for 2 containers	Required for importation of the proposed procurements	When due
3432 Documentation for procurements of 2 containers Bill of Lading (BL)	As above	When due
3433 TASAC FEES for 2 Containers	As above	When due
3434 Terminal handling & verification charges	As above	When due
3435 Port wharfage total for procurement	As above	When due



Indufor ...forest intelligence

NIRAS